



Peers, Pros and Passions: the Europeana Network Association


Thursday 1 December 2022






when cultural meets digital

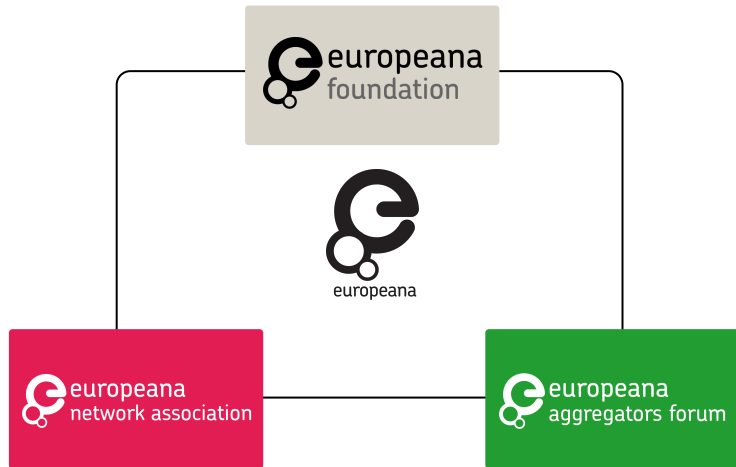


Sofie Taes
Innovation Manager
DigitGLAM (KU Leuven, BE)

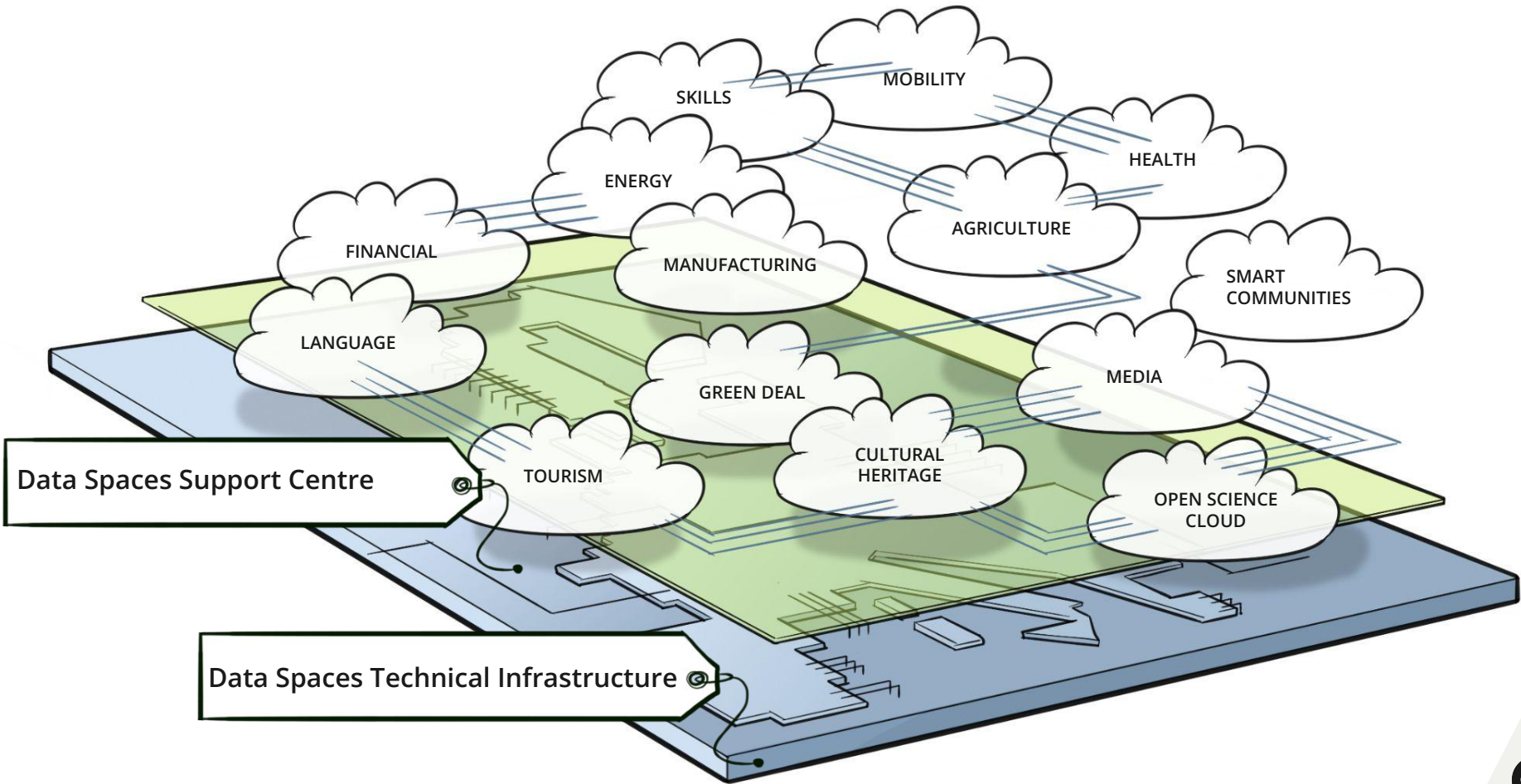
 **Call Me**

 **Email**

 **Facebook**







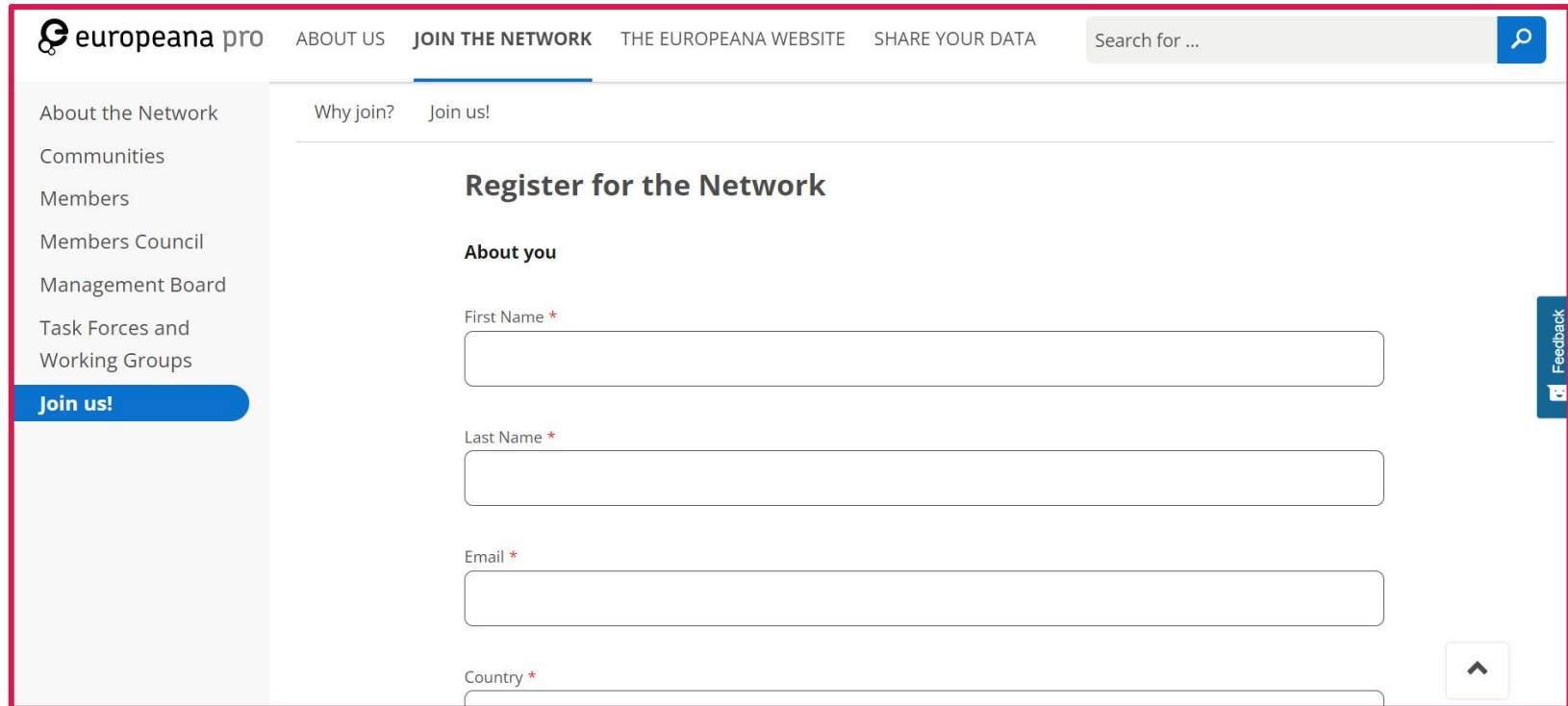
What is ENA about?

- ❑ The Europeana Network Association (ENA) is a strong and **democratic community** of people who work, study or have an **interest in digital cultural heritage**.
- ❑ Represents not only members from the CHI sector, but from adjacent fields (tourism, media, communication, socio-political activism, academia...) as well: a **vibrant ecosystem**.
- ❑ Helps to inspire and implement Europeana's roadmap with a bottom-up approach: **co-governance** and co-creation.
- ❑ Allows for different levels and modes of **interaction**.
- ❑ Is a place to meet likeminded, **exchange** knowledge and expertise, get excited about cultural collections and good stories, and use shared passion as a seed for cultural innovation and social cohesion.

Who can join?

- ❑ Anyone with **an interest** in digital cultural heritage, from a personal or professional point of view.
- ❑ Anyone wanting/willing to play an **active role** in a continuously growing network of equals.
- ❑ Anyone who completes the (concise) **registration form** on pro.europeana.eu

<https://pro.europeana.eu/europeana-network-association/sign-up>



The screenshot shows the sign-up page for the Europeana Network Association. The page has a red header with the Europeana Pro logo and navigation links: ABOUT US, JOIN THE NETWORK (highlighted), THE EUROPEANA WEBSITE, and SHARE YOUR DATA. A search bar is located in the top right. A left sidebar contains a menu with items: About the Network, Communities, Members, Members Council, Management Board, Task Forces and Working Groups, and a highlighted 'Join us!' button. The main content area is titled 'Register for the Network' and includes a sub-section 'About you' with four required input fields: First Name, Last Name, Email, and Country. A 'Feedback' button is on the right, and an upward arrow button is at the bottom right.

europeana pro ABOUT US **JOIN THE NETWORK** THE EUROPEANA WEBSITE SHARE YOUR DATA Search for ...

About the Network
Communities
Members
Members Council
Management Board
Task Forces and Working Groups
Join us!

Why join? Join us!

Register for the Network

About you

First Name *

Last Name *

Email *

Country *

Feedback

↑

But why would you...?



Join communities




Join communities

Exchange knowledge, expertise
and best practice in our seven
special interest communities.


Impact, Tech, Communicators, Copyright,
Research, Climate Action, Education

Europeana Education



Built with Bits 2: The Library Corner

▼ 4 more properties

 **BUILT WITH BITS**

THE LIBRARY CORNER

Hello! Built with Bits is an international programme to help create virtual immersive spaces as a means to address different social, cultural and educational issues.



BUILT WITH BITS 2 JUNE - DECEMBER 2022



Web: 0.19xjv5l8n, Meta: Luksa Ghada, 18. Loharbo da Vito of Loharbo, 189, 2021 00 81-0A

[Built with Bits 2° Edition](#) & [Low-Code Fest 2022](#)

Europeana Communicators



Build your communications confidence! Sign up for our workshops

Created: 14 September 2022

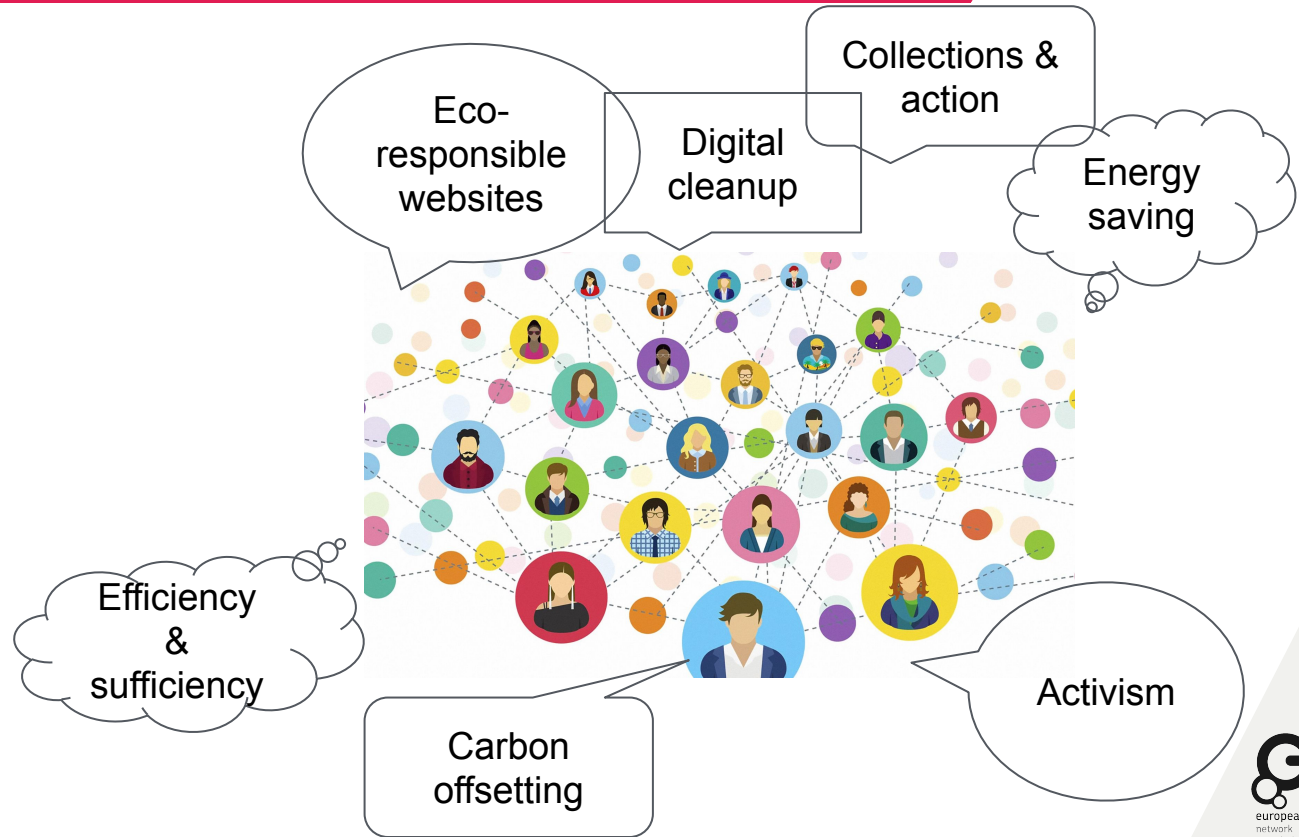
In October, we're kicking off a new series of workshops run by Europeana Foundation communications colleagues and drawing on expertise from the Europeana Network Association and beyond. Find out how to join!

[digital-storytelling](#) [europeana-communicators](#)

- [Digital Storytelling Festival](#) & [communications webinars](#)

Europeana Climate Action

Monthly themed [drop-in sessions](#) to connect with the community for exchange, brainstorming and idea generation





Audiovisual Playout in Europeana

This Task Force aims to investigate audiovisual playout possibility and capabilities for the Europeana Foundation and content providers.



Capacity Building Working Group

This working group aims to support the implementation of a capacity building working plan for the common European data space for cultural heritage.



Data Quality Committee

Quality is a key priority for our whole community! The Data Quality Committee is a EuropeanaTech Working Group which aims to address key data quality issues.



ENA Membership Working group

This Working Group explores the membership benefits of the Europeana Network Association (ENA), and looks for new ways to engage and recruit members.



Governance Working Group

This Working Group aims to address the governance of the Europeana Network Association and ensure its good and democratic development.



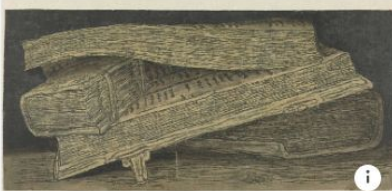
IIIF & Europeana Working Group

This Working Group follows the first of the proposals from the Task Force Preparing Europeana for IIIF involvement.



Impact Lite Training and Community Building Task Force

This Task Force builds further on the outcomes of the original Impact Lite Task Force and aims to develop an Impact Lite training methodology and introductory course.



Libraries Working Group

This Working Group aims to support libraries to engage with Europeana.



Out of Commerce works Working Group

This Working Group provides a space to exchange information and recommend approaches to successfully use the legal solution to make out of commerce works available online.



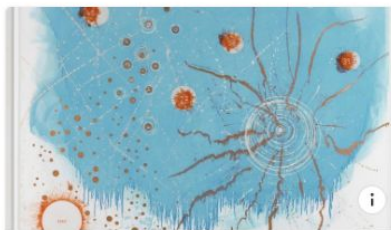
Supporting the digital cultural heritage of Ukraine Working Group

This Working Group aims to support existing initiatives and develop new, concerted actions that respond to the current needs of the Ukrainian digital heritage sector. It is a joint Working Group from the Europeana Initiative.



Workflow from shelf to Europeana

This Task Force aims to support cultural heritage organisations, especially smaller ones, establish an easy-to-use workflow for each step 'from shelf to Europeana'.



Linked Data Task Force

This Task Force aims to show aggregators the value of interlinking heterogeneous data from various sources, and guide them and their network with guidelines to implement Linked Data.



Collaborate



Collaborate

Meet colleagues from the cultural heritage sector to develop new projects and foster cross-border and cross-domain collaboration.



Participate in events



Participate in events



Stay informed

Get the latest news from Europeana and the Europeana cultural heritage landscape through our monthly Network Association newsletter and community updates.



Lead



Lead

Stand for election as a Members Councillor to lead on new initiatives for digital cultural heritage and influence the future of the Europeana Initiative.



Influence the sector



Influence the sector

Work with the Europeana Foundation to involve policymakers, make recommendations and set the agenda for digital cultural heritage in funded Task Forces and Working Groups.



Stay informed



Stay informed

Get the latest news from Europeana and the Europeana cultural heritage landscape through our monthly Network Association newsletter and community updates.

Why we'd love for you to join: realizing the ENA priorities for the Data Space

1. Promote close **cooperation** throughout the data space
2. Engage younger and more **diverse** participation
3. Build sectoral **capacity** to support reuse of high quality data
4. Help build a **climate-proof** data space.

1 - Promote close cooperation throughout the data space

- ENA will become a bottom-up ambassador towards policy makers and professionals at country level, helping make the data space comprehensible and encouraging relevant action.
- Expansion of ENA activities to respond to the needs of a wider set of stakeholders.



[Neurones connecting](#) - Wellcome Collection, CC0

2 - Engage younger and more diverse participation in ENA

- Define a strategy to involve young audiences and new professionals
- Involve new audience groups in re-conceptualizing a strong brand, through building awareness and engagement within and beyond ENA



[Neurone development](#), Wellcome Collection CC0

3 - Build capacity to support reuse of high quality data

- Support training for ENA members and the wider community to address gaps in skills and knowledge, encouraging exchange of expertise; peer to peer learning.
- Identify and mine expertise in the network to support data space priorities.
- Encourage digital cultural heritage professionals and audiences to pursue creative roles and activities



['Generating ideas'](#), digital artwork by Bill McConkey, Wellcome Collection, CC BY

4 - Help build a climate-proof data space

- Work through the Climate Action Community to increase the responsiveness and proactivity of Network members in climate change actions
- Analyse opportunities, costs, timings and feasibility of climate mitigation and adaptation actions.
- Support the dissemination of best practices through Councillors, country advocacy groups and the wider membership



[Protest sign](#), Finnish Heritage Agency, CC BY

We Greece

ENA **members** from Greece: 269

In **communities**:

- Climate: 36
- Copyright: 94
- Impact: 117
- Communicators: 123
- Tech: 151
- Research: 179
- Education: 209

More stats for Greece

Communities' steering group members from Greece:

- Climate: Evangelia Paschalidou
- Communicators: Vaya Papadopoulou
- Copyright: Marina Markellou
- Education: Georgia Manolopoulou
- Tech: Georgia Angelaki

Current Greek presence in the Members Council: Georgia Manolopoulou and Vassiliki Sakka

Some final interesting facts

- Date first **member** from Greece joined ENA: 17 August 2015
- First **Councillors** from Greece: Vera Kriezi and Georgia Angelaki elected in 2017
- Georgia went on to be elected into the **Management Board**, and currently is a member of the **Advisory Board**

Join the movement

sofie.taes@kuleuven.be

<https://pro.europeana.eu/page/europeana-network-association>

