



Marie Skłodowska-Curie Actions

Staff Exchanges

Cyprus - Greece MSCA Staff Exchanges & COFUND - Info day, 9th November 2021

Eleftheria LYKOURESSI – Vasiliki EXARCHOU

European Research Executive Agency



@REA_research, @MSCAactions

Overview



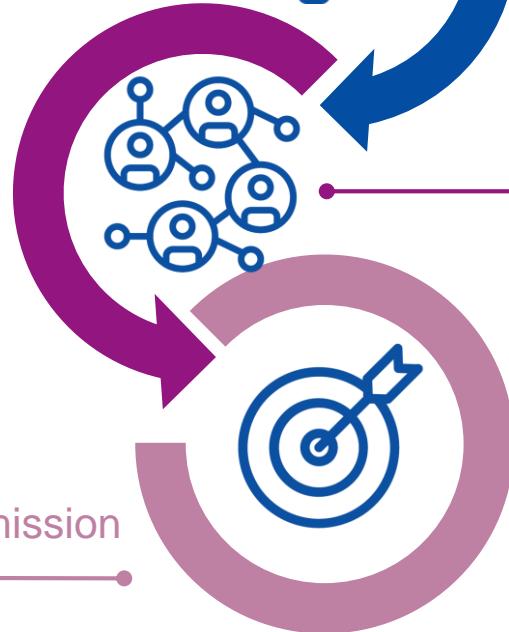
1. Policy background

Horizon Europe & MSCA



2. MSCA Staff Exchanges-Main Features

- Objectives
- Added value
- Eligibility rules
- Budget
- Key features



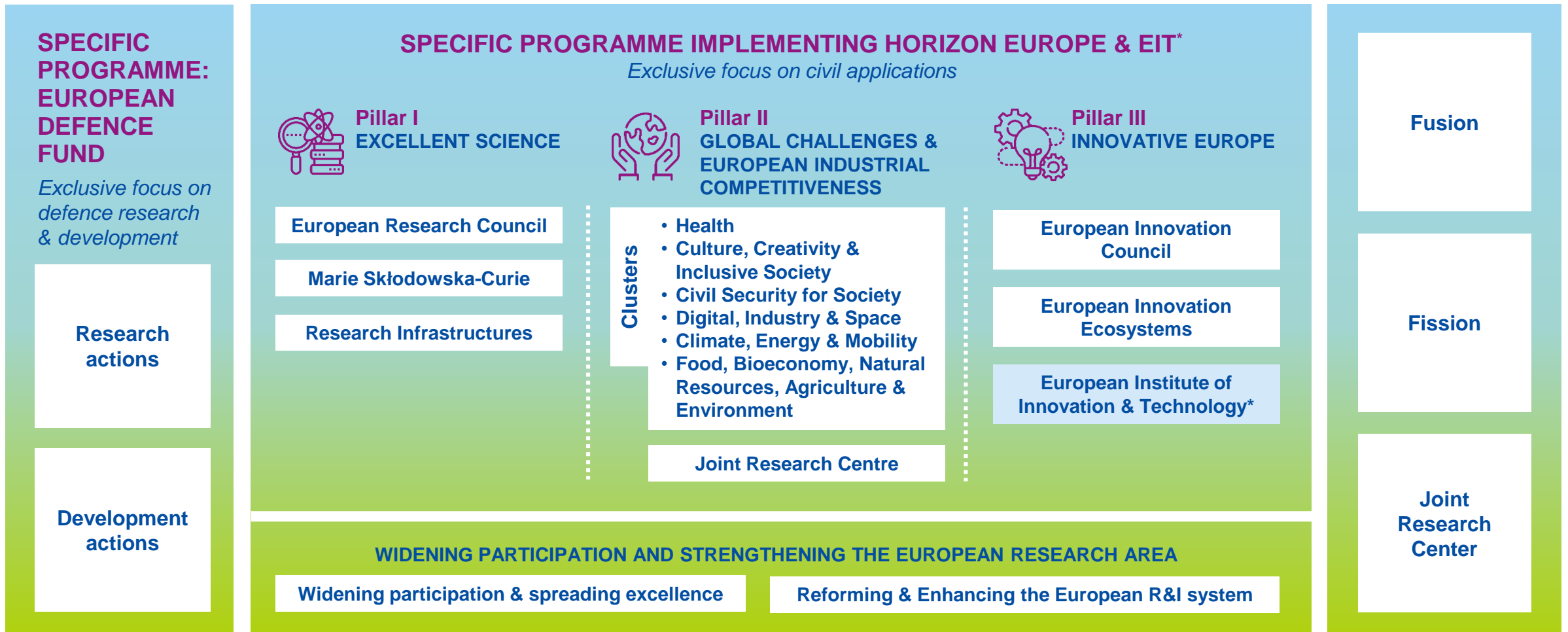
3. MSCA Staff Exchanges- Proposal submission

- Evaluation criteria
- Next calls
- Additional Information
- Tips and Tricks

1. Policy background

HORIZON EUROPE

EURATOM



* The European Institute of Innovation & Technology (EIT) is not part of the Specific Programme

HORIZON EUROPE

EURATOM

SPECIFIC PROGRAMME: EUROPEAN DEFENCE FUND

Exclusive focus on defence research & development


Research actions

Development actions

SPECIFIC PROGRAMME IMPLEMENTING HORIZON EUROPE & EIT*


Exclusive focus on civil applications

**Pillar I
EXCELLENT SCIENCE**



- European Research Council
- Marie Skłodowska-Curie
- Research Infrastructures

**Pillar II
GLOBAL CHALLENGES & EUROPEAN INDUSTRIAL COMPETITIVENESS**




Clusters

- Health
- Culture, Creativity & Inclusive Society
- Civil Security for Society
- Digital, Industry & Space
- Climate, Energy & Mobility
- Food, Bioeconomy, Natural Resources, Agriculture & Environment

Joint Research Centre

**Pillar III
INNOVATIVE EUROPE**



- European Innovation Council
- European Innovation Ecosystems
- European Institute of Innovation & Technology*

WIDENING PARTICIPATION AND STRENGTHENING THE EUROPEAN RESEARCH AREA

- Widening participation & spreading excellence
- Reforming & Enhancing the European R&I system

Fusion

Fission

Joint Research Center

* The European Institute of Innovation & Technology (EIT) is not part of the Specific Programme

Pillar I: Excellent Science

Reinforcing and extending the excellence of the Union's science base

European Research Council

Frontier research by the best researchers and their teams

€16 billion

Marie Skłodowska Curie Actions

Equipping researchers with new knowledge and skills through mobility and training

€6.6 billion

Research Infrastructures

Integrated and inter-connected world-class research infrastructures

€2.4 billion

Marie Skłodowska-Curie Actions (MSCA)

The MSCA have **5** main actions

Doctoral Networks

implement doctoral programmes (including joint doctorates and industrial doctorates) **by international partnerships** of organisations from different sectors. They train highly-skilled doctoral candidates, stimulate their creativity, enhance their innovation capacities and boost their employability in the long-term.

Postdoctoral Fellowships

support researchers' careers and foster excellence in research and innovation. Researchers holding a PhD can carry out their research activities, acquire new skills and develop their careers abroad, whilst developing competences in non-academic sectors and working within interdisciplinary teams.

Staff Exchanges

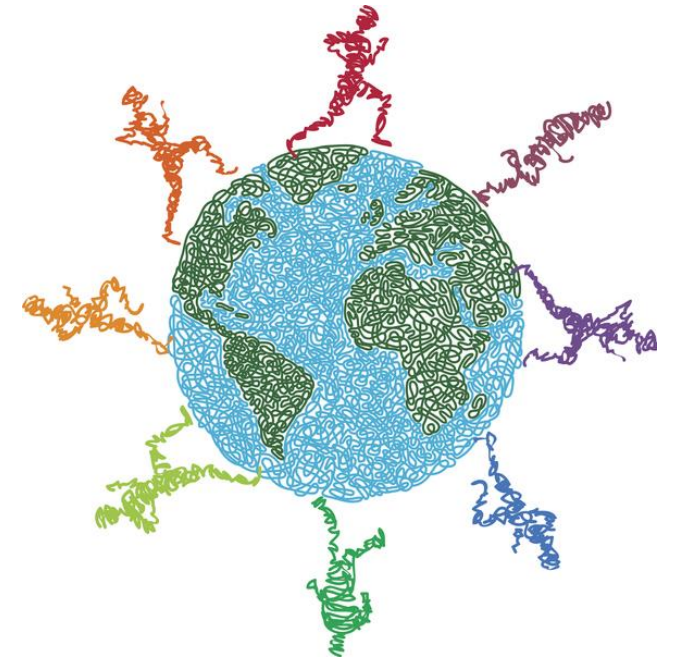
encourage short-term international and inter-sectoral exchanges of research and innovation staff through sustainable, collaborative projects in Europe and beyond. By doing so, they enhance knowledge and skills transfer and increase organisations' research and innovation capacities.

MSCA and Citizens

brings research and researchers closer to children, families and the public at large through the European Researchers' Night - the annual research communication and promotion event taking place at the end of September across EU Member States and Horizon Europe Associated Countries.

COFUND

co-finances regional, national and international doctoral and postdoctoral programmes for researchers' training and career development. The COFUND action spreads MSCA's best practices by setting high standards and excellent working conditions, and boosts training and international, interdisciplinary and inter-sectoral mobility.



2. Staff Exchanges

Main features

Objectives



International, inter-sectoral and interdisciplinary mobility of R&I staff (“secondments”)

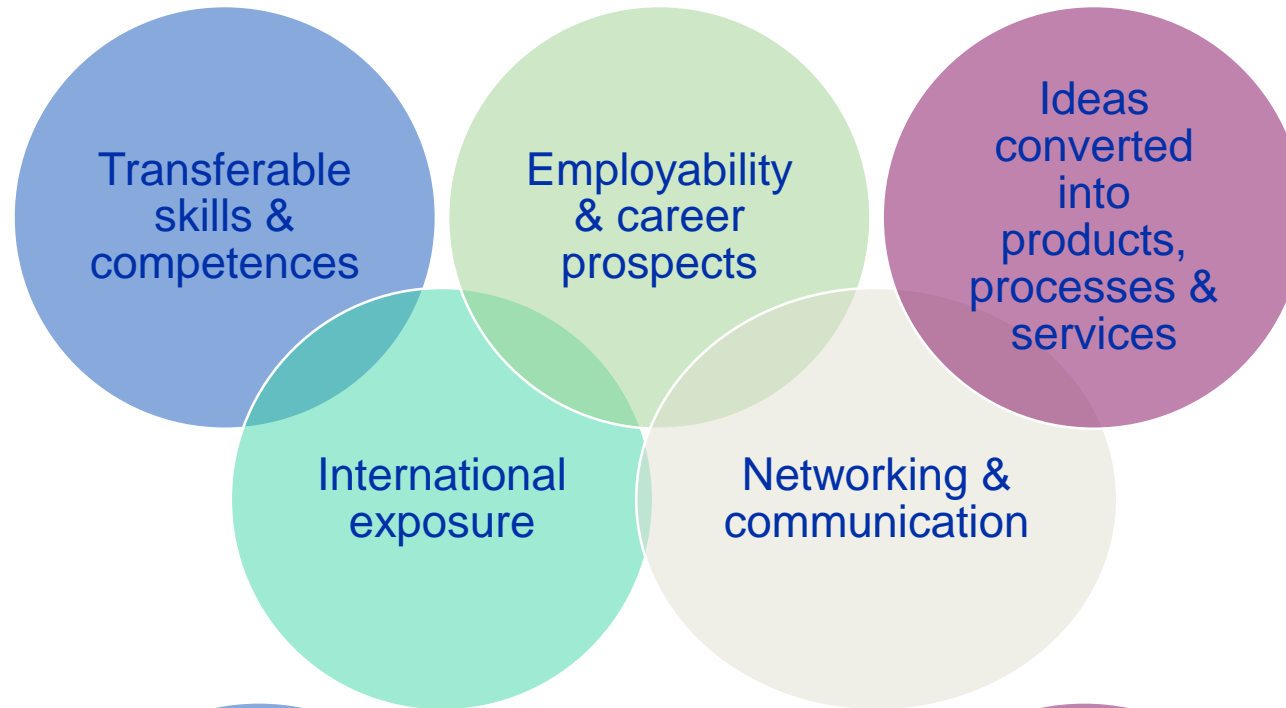
Knowledge transfer between participating organisations

Collaboration between the academic and non-academic sectors (including SMEs)

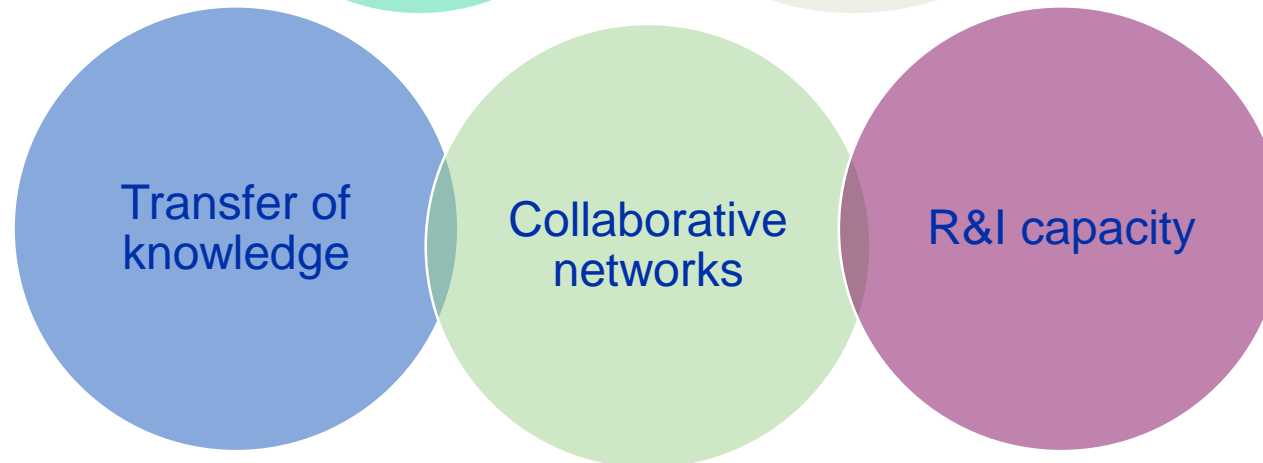
Cooperation across the globe

Added value

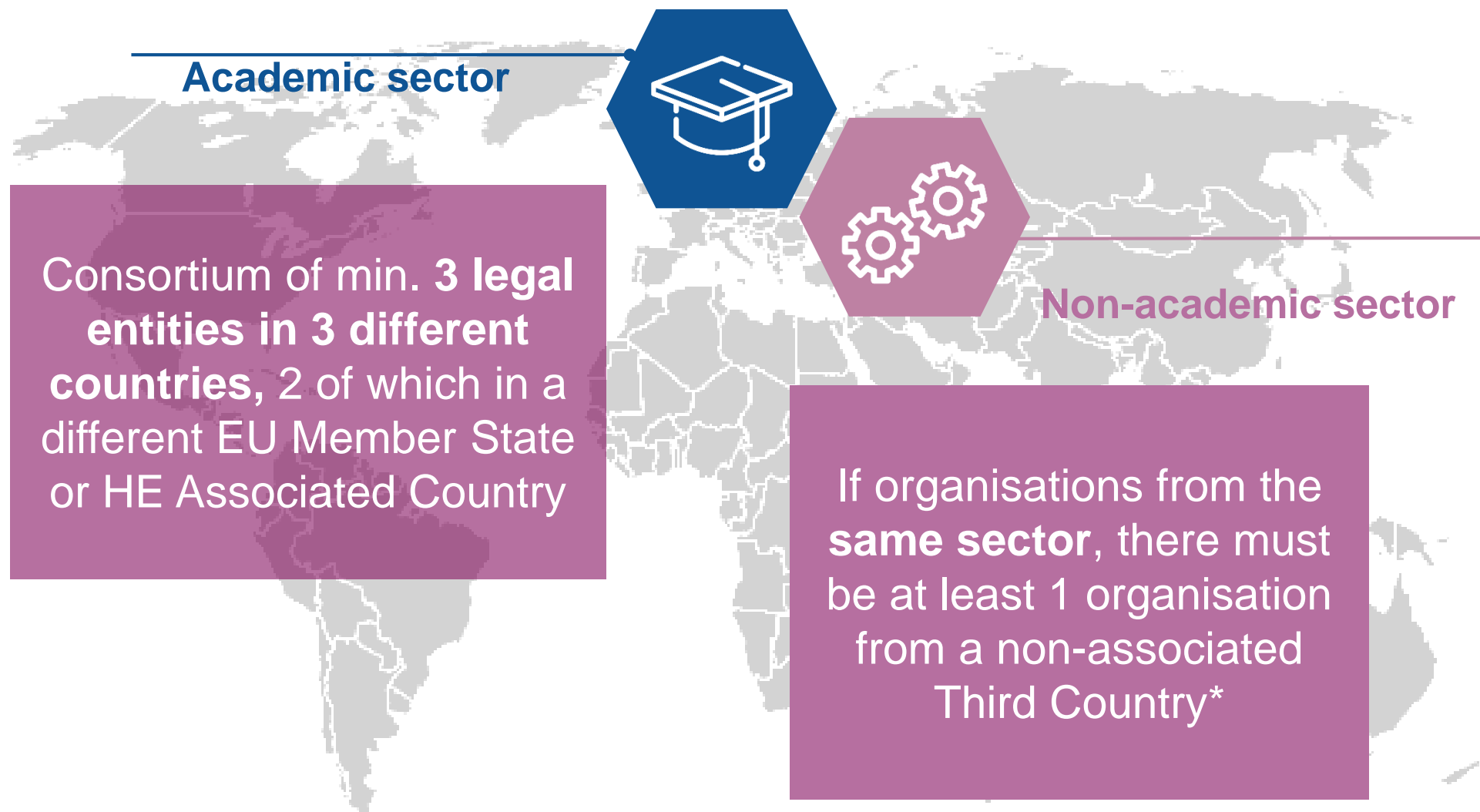
Staff members



Organisations



Eligible participants



* Secondments within EU MS or HE AC must be between different sectors (between academic and non-academic), except for interdisciplinary secondments, which must be limited to a maximum of 1/3 of the total implemented months.

Eligible staff



Seconded staff members



Any type of staff involved in R&I activities (researchers, administrative staff, managerial staff, technical staff)

Each staff member is seconded for a period of **1 to 12 months** (may be split into several stays)

Researchers at any career stage (from doctoral candidates to postdoctoral researchers)

Staff needs to be devoted **full-time** to the action during the secondment

Actively engaged in research and/or innovation activities for at least **1 month** prior at the sending institution

After the secondment, staff should **return to their sending institution**

What does Staff Exchanges fund?



Eligible exchanges

		"HOSTING" (receiving seconded staff members)		
		Academic organisation in MS/AC (1)	Non-academic organisation in MS/AC (2)	Organisation in TC*
"SENDING" (seconding staff members from organisation)	Academic organisation in MS/AC (1)	1/3	✓	✓
	Non-academic organisation in MS/AC (2)	✓	1/3	✓
	Organisation in TC*	✓	✓	✗

1/3 This symbol refers to same sector secondments up to 1/3 of the total implemented secondments funded by the EU as long as they are demonstrated to be interdisciplinary.

* denotes TC partners that are eligible for automatic funding

Same-sector secondments in Europe (MS/AC)



≤ **1/3** of the total secondments funded by the EU,
if considered ***Interdisciplinary***

Interdisciplinary secondments integrate aspects
from two or more different scientific disciplines.

Important: **scientific panels + descriptors/first level
MSCA keywords** from proposal form part A
(see [REA Website](#))

Interdisciplinary mobility explained (1)



Life Sciences (LIF)

- L6-Immunity and infection
 - Parasitology

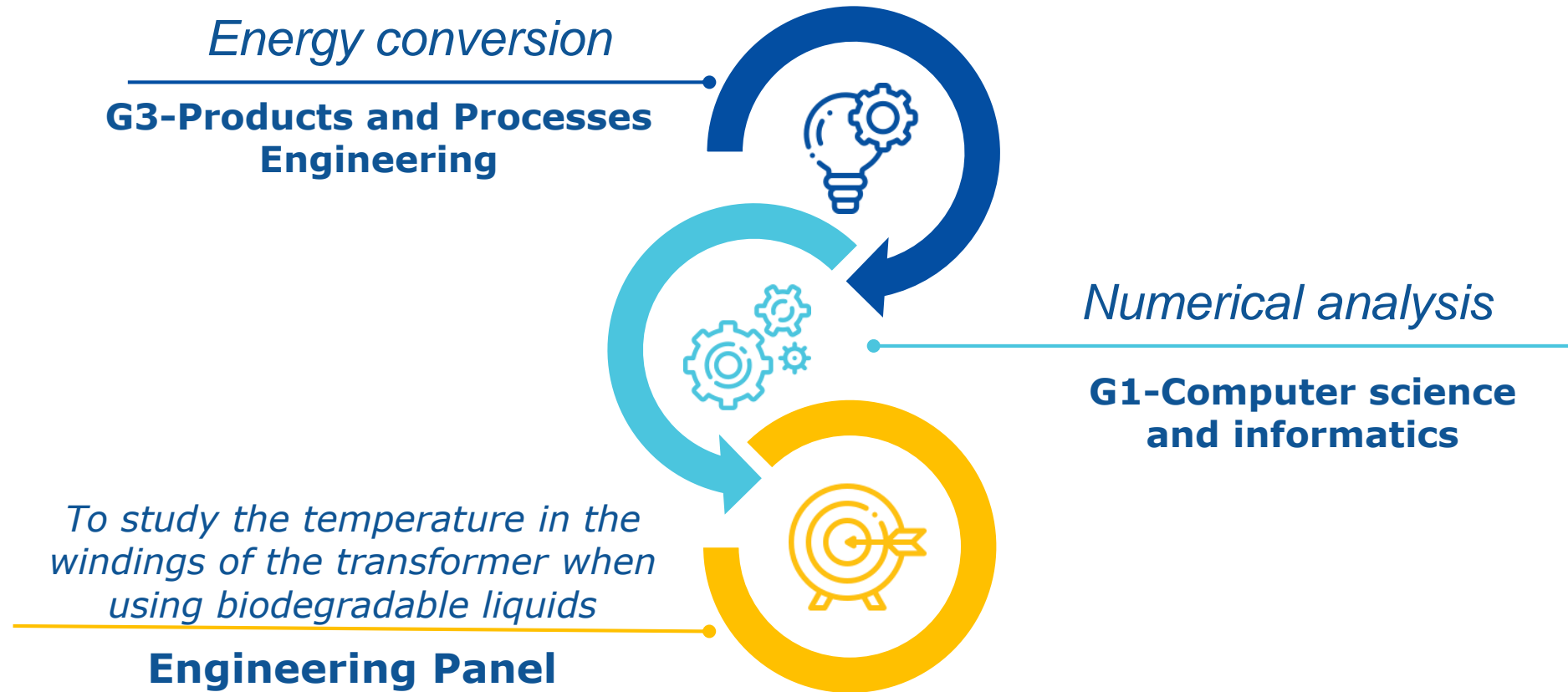


Social Sciences and Humanities (SOC)

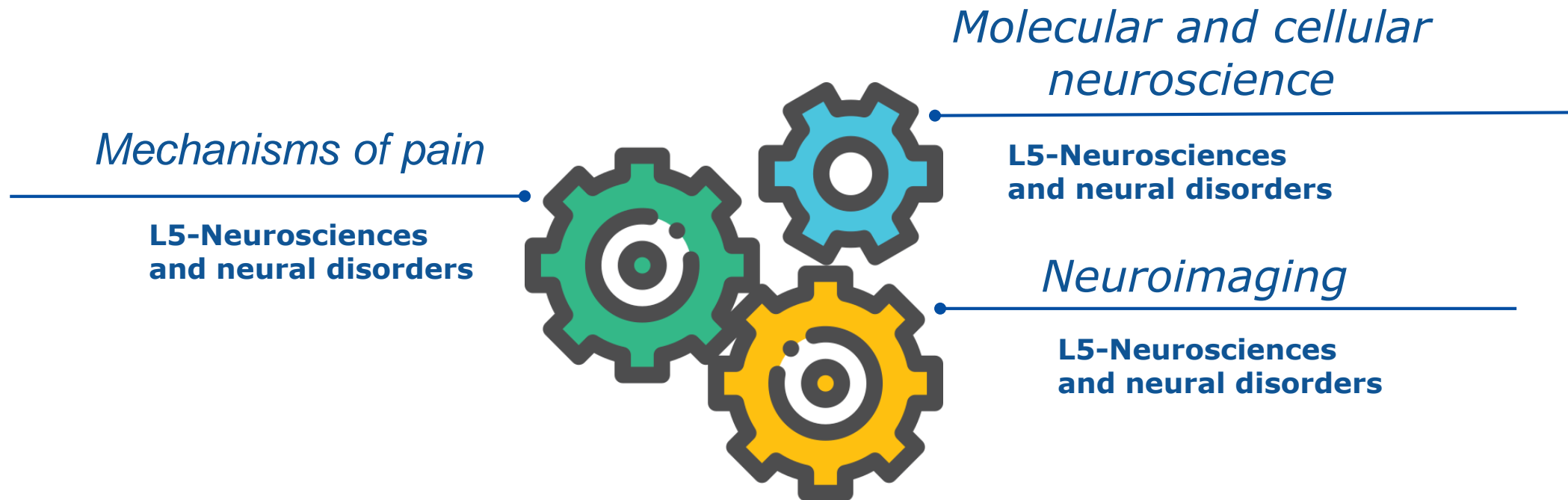
- S9-Archaeology, history and memory
 - Egyptology



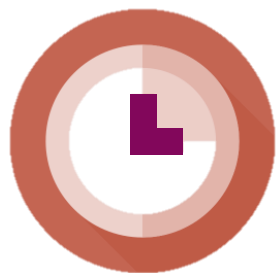
Interdisciplinary mobility explained (2)



Interdisciplinary mobility explained (3)



Key features – summary



DURATION

4 years
360 PM per project



SECONDMENTS

1-12 months per staff
Interdisciplinary
secondments: same
sector, within Europe
for max 1/3 PM



UNIT COST

4600€
2300€ - Staff
allowance
2300€ -
organisation



BUDGET

EU funding
average
75,5 Mio€/call

3. Staff Exchanges

Proposal submission & evaluation

Proposal Submission



Funding & tender opportunities
Single Electronic Data Interchange Area (SEDIA)



SEARCH FUNDING & TENDERS ▼

HOW TO PARTICIPATE ▼

PROJECTS & RESULTS

WORK AS AN EXPERT

SUPPORT ▼

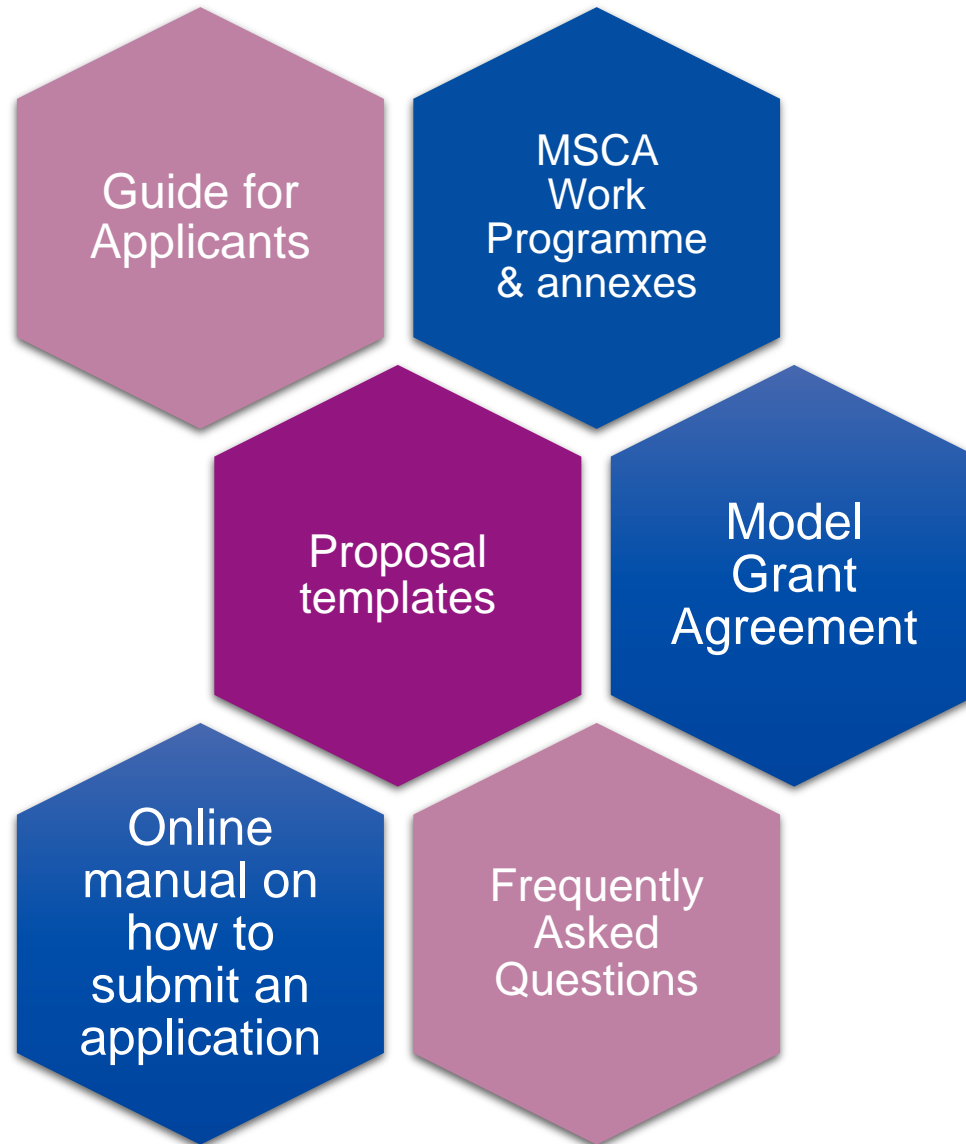
All calls are published on the **Funding and Tender Opportunities Portal**.
Applications are submitted through the portal:

- Find your call
- Sign in to the portal and register your organisation (get a PIC number)
- Find partners
- Apply!

<https://ec.europa.eu/info/funding-tenders/opportunities/portal/>



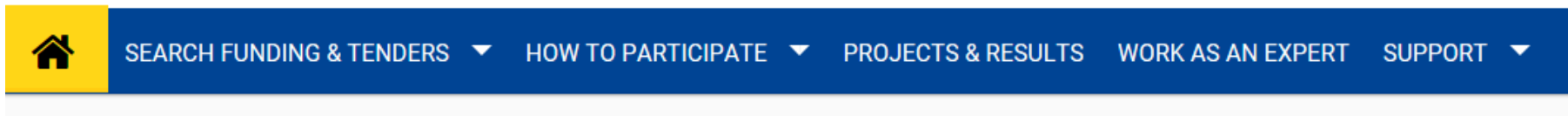
Reference Documents



Proposal documents

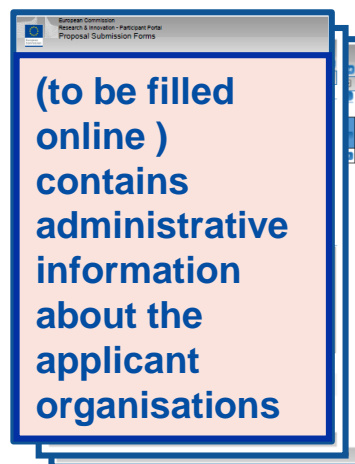


Funding & tender opportunities
Single Electronic Data Interchange Area (SEDIA)

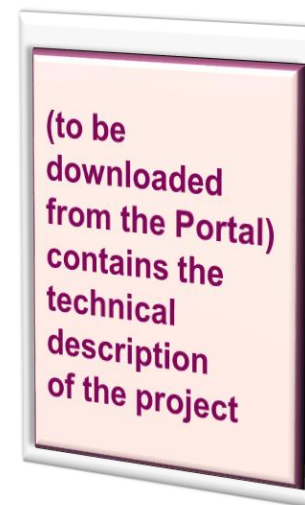


Apply here!

Part A
(structured data)



Part B
(description of action)



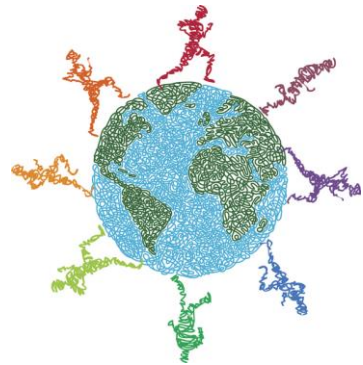
Evaluation criteria

Excellence	Impact	Quality and efficiency of the implementation
Quality and pertinence of the project's research and innovation objectives (and the extent to which they are ambitious, and go beyond the state of the art)	Developing new and lasting research collaborations , achieving transfer of knowledge between participating organisations and contributing to improving research and innovation potential at the European and global level	Quality and effectiveness of the work plan , assessment of risks , and appropriateness of the effort assigned to work packages
Soundness of the proposed methodology (including i3 approaches, consideration of the gender dimension and other diversity aspects, and the quality of open science practices)	Credibility of the measures to enhance the career perspectives of staff members and contribution to their skills development	Quality, capacity and role of each participant, including hosting arrangements and extent to which the consortium as a whole brings together the necessary expertise
Quality of the proposed interaction between the participating organisations in light of the research and innovation objectives	Suitability and quality of the measures to maximise expected outcomes and impacts , as set out in the dissemination and exploitation plan, including communication activities The magnitude and importance of the project's contribution to the expected scientific, societal and economic impacts	
50%	30%	20%



Evaluation

Formula for Staff Exchanges success stories



$$= (E + I) \text{Impact}$$

Excellence and **I**mplementation are closely interlinked!

Next MSCA SE calls

Call	2021		Call	2022	
	Opening Closing	Budget (M€)		Opening Closing	Budget (M€)
Staff Exchanges	07/10/2021 09/03/2022	72,5	Staff Exchanges	06/10/2022 08/03/2023	77,5

Tips and tricks

Closely follow the call requirements

Be in line with the action's objectives and expected outcomes

Follow available guidelines

Use the structure provided in the template and address all the evaluation criteria

Highlight the EU dimension

Show that your proposal addresses EU policy priorities and/or societal challenges

Get a second opinion

Have your proposal proof-read by a colleague and pre-screened by your NCP

Sustainability of collaboration

Describe the benefits of cooperation and how they can go beyond this project

Contact your National Contact Point (NCP)

Thank you



European Research Executive Agency



@REA_research, @MSCActions



© European Union 2020

Unless otherwise noted the reuse of this presentation is authorised under the [CC BY 4.0](https://creativecommons.org/licenses/by/4.0/) license. For any use or reproduction of elements that are not owned by the EU, permission may need to be sought directly from the respective right holders.

Slides 2,8,9,10,13 element concerned, source: flaticon



Webinar

Staff Exchanges

19.11.2021
10:30 CET

SLIDO:
#SE21

MSCA

Marie Skłodowska-Curie Actions
Developing talents, advancing research

