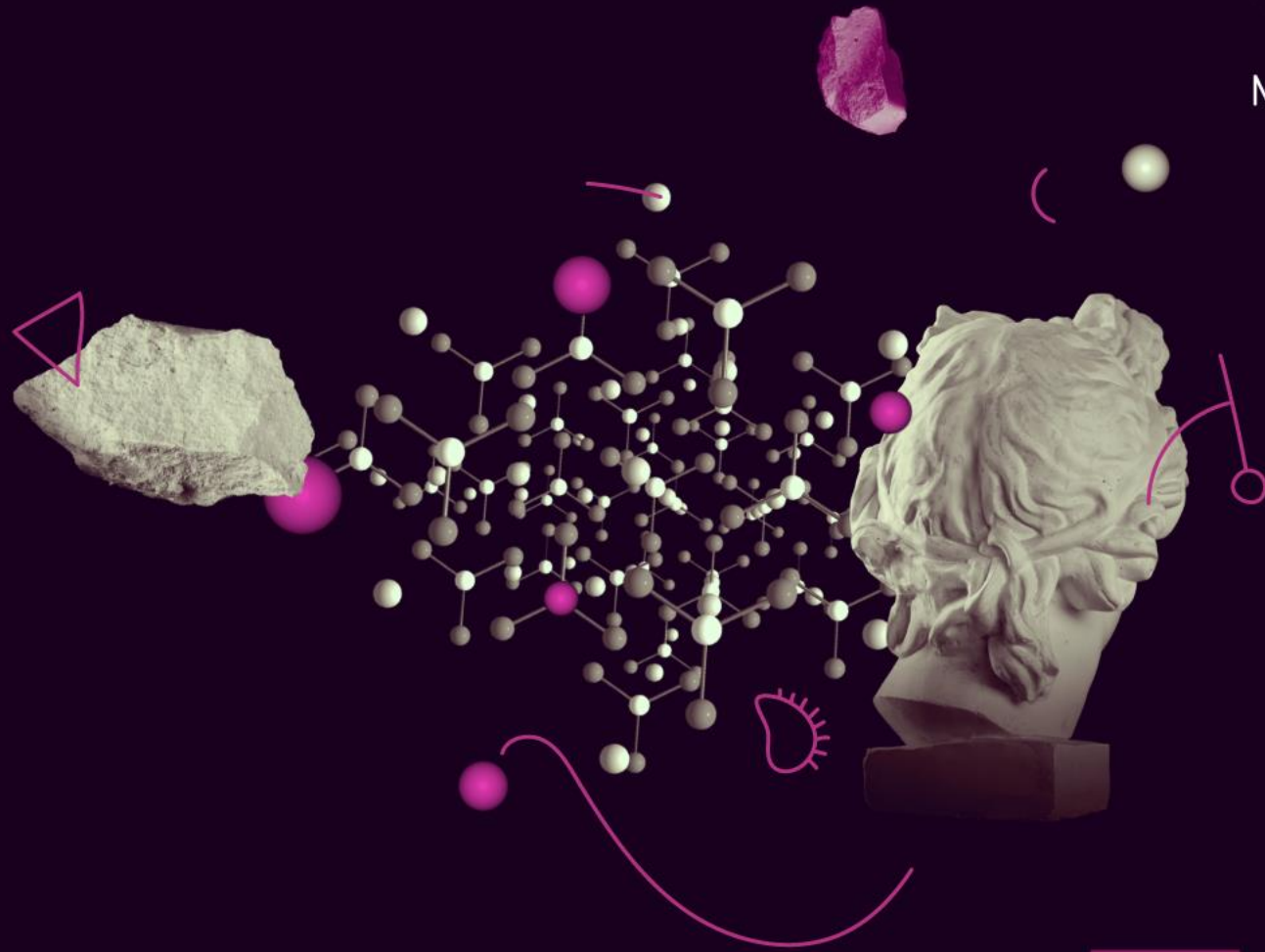




MSCA

Marie Skłodowska-Curie Actions

Developing talents, advancing research



MSCA overview

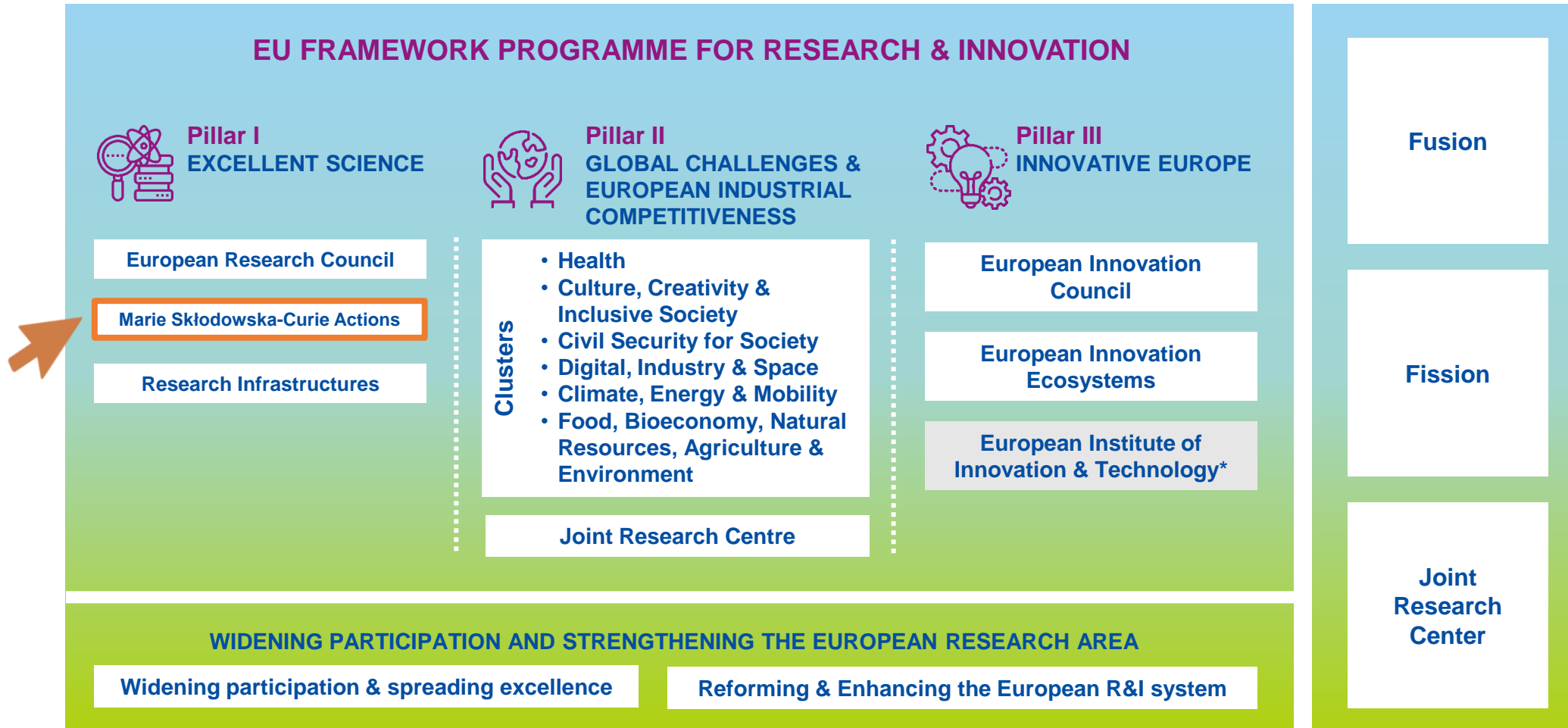
Ms Eleni Deligianni & Dr Theodoros Staikos

Unit A1 & Unit A2
European Research Executive Agency (REA)

28 February 2023

Horizon Europe

EURATOM



2021-2027

Budget: EUR 95.5 billion

Pillar I: Excellent Science

Reinforcing and extending the excellence of the Union's science base

European Research Council

Frontier research by the best researchers and their teams

€16 billion

Marie Skłodowska Curie Actions

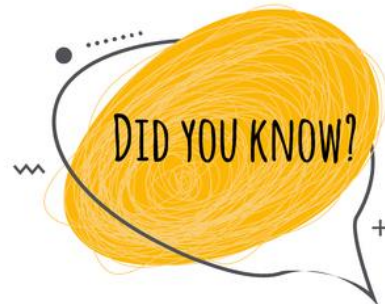
Equipping researchers with new knowledge and skills through mobility and training

€6.6 billion

Research Infrastructures

Integrated and inter-connected world-class research infrastructures

€2.4 billion



12 Nobel Prize winners either backed by or involved in the Marie Skłodowska-Curie Actions between 2012 and 2020



The Actions

Doctoral Networks

Doctoral programmes in and outside academia incl. joint & industrial doctorates

Postdoctoral Fellowships

Support to excellent postdoctoral researchers

Staff Exchanges

Support for research and innovation staff exchanges

COFUND

Co-funding doctoral and postdoctoral programmes

MSCA and Citizens

Public outreach events (Night)

Key features



Researchers' training, skills and career development (all stages of career)



Excellent research in all domains (bottom-up approach)



International, inter-sectoral (academic/non-academic) & interdisciplinary mobility



Attractive working and employment conditions



Structuring impact on organisations + strategic international partnerships



Fostering collaboration beyond academia, notably with industry

Key figures (2014-2020)

+65,000

Researchers,
including 25,000
PhD candidates

50 % of all third
countries'
participations in
H2020

~40% of researchers
from outside of the EU

42%

Female
researchers

+1,000

Doctoral
programmes

Over 5000

Companies
supported

6.5 billion €

Under Horizon
2020



Supporting both organisations and individuals



Organisation

- Any legal entity
- From academic or non-academic sector
- Beneficiary or associated partner
- Applies to Doctoral Networks, Staff Exchanges and COFUND



Individual researcher

- Any nationality
- Specific conditions (mobility rule, PhD, nationality/residence for Global PF)
- Applies to Postdoctoral Fellowships jointly with host in EU/AC

Who do the MSCA support?

Researchers	Actions available
Researchers without a PhD degree	Doctoral Networks Staff Exchanges COFUND-Doctoral
Researchers with a PhD degree	Postdoctoral Fellowships Staff Exchanges COFUND-Postdoctoral
Other staff (Research managers, technicians, etc.)	Staff Exchanges

MSCA Work Programme 2023-2024

- The new MSCA Work Programme for the period 2023-2024 was published on 06 December 2022
- Covers Budget as well as Calls for Proposals for all MSCA funding schemes
- Budget for MSCA calls 2023: EUR 889.1 million
- Budget for MSCA calls 2024: EUR 913.16 million

More info:

Horizon Europe MSCA Work Programme 2023-2024

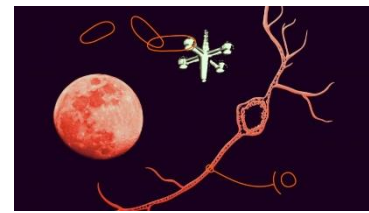
https://ec.europa.eu/info/funding-tenders/opportunities/docs/2021-2027/horizon/wp-call/2023-2024/wp-2-msca-actions_horizon-2023-2024_en.pdf

[Funding & tenders \(europa.eu\)](https://ec.europa.eu/info/funding-tenders/opportunities/docs/2021-2027/horizon/wp-call/2023-2024/wp-2-msca-actions_horizon-2023-2024_en.pdf)

MSCA WP 2023-2024 - Cross-cutting Novelties

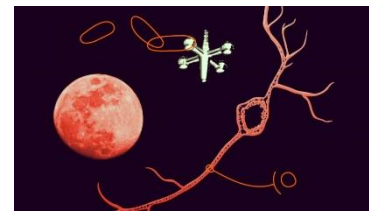
WP 2022	WP 2023-2024
	Text consistency: EU Missions ; I3 mobility (international, inter-sectoral, interdisciplinary)
	References to reports on synergies with ERDF, EIT, Erasmus+
	Training to made compliant with research assessment reform , e.g. good scientific conduct such as research integrity, societal engagement, other research outputs including data...
	New CSA Feedback to Policy

MSCA Doctoral Networks



- **Multi-beneficiary action** to set up innovative **doctoral programmes**, including:
 - **Standard Doctorates:** Training in academia and/or industry
 - **Industrial Doctorates:** Training in academia and industry; Joint supervision
 - **Joint Doctorates:** Joint collaborations leading to a joint/double/multiple doctoral degree; Joint selection, supervision and governance structure; Pre-agreement for joint degrees required
- They respond to **well-identified needs in various R&I** areas (**bottom-up**)
 - **Focus on individual research projects** embedded in the research programme of each project
 - **Expose researchers** to the academic & non-academic sector
 - **Important aspects: career development plan, supervision, training:** research and transferable skills & competences relevant for innovation/ long-term employability.

MSCA Doctoral Networks



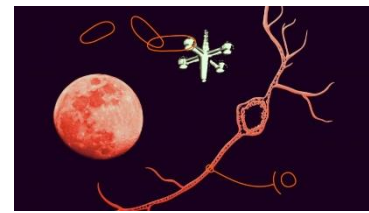
- **Target group**

- **doctoral candidates**, i.e., researchers without a doctoral degree at the date of the recruitment; mandatory enrolment in a doctoral programme in at least 1 EU MS/AC (at least 2 for Joint Doctorates)
- **candidates apply to vacancies published** by the institutions participating in the projects in **EURAXESS platform**

- **Who applies?**

- **consortia** of universities, research institutions and research infrastructures, businesses including SMEs, and other socio-economic actors; each beneficiary to recruit at least 1 researcher
- at least **3 independent legal entities**, each established in a different MS or AC; **min.1 beneficiary from a MS** (on top of this minimum, any entity from any third country can join)

MSCA Doctoral Networks



- **Size**

- Currently up to **360 person-months (standard)** + **180** additional person-months for Joint or Industrial doctorates (incentive); as from 2023, max 540 person months for all implementation modes

- **Duration**

- **Programme:** currently max. 48 months for all implementation modes, as from 2023 exception up to 60 months for Joint doctorates
- **Fellow recruitment:** between 3 and 36 months, as from 2023 exception up to 48 months for Joint doctorates
- **Secondments:** up to 1/3 of the fellowship duration for standard DN, no limitation for Industrial and Joint doctorates
- **Industrial doctorates:** at least 50% of the fellowship in the non-academic sector; can be in the same country as the academic host organisation

- **Call:**

- 2022 closed. **Next call opening end of May 2023**
- **Resubmission restrictions** applying as of 2022 for proposals receiving a score **below 80%** in the previous Horizon Europe call

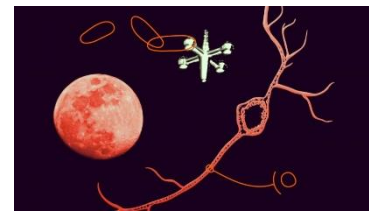
MSCA Doctoral Networks – Unit contributions



Contributions for recruited researchers Per person-month					Institutional unit contributions Per person-month	
Living allowance	Mobility allowance	Family allowance (if applicable)	Long-term leave allowance (if applicable)	Special needs allowance (if applicable)	Research, training and networking contribution	Management and indirect contribution
EUR 3 400	EUR 600	EUR 660	EUR 4 000 x % covered by the beneficiary	Requested unit ¹ x (1/number of months)	EUR 1 600	EUR 1 200

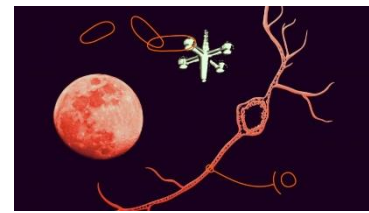
¹The pre-defined categories are as follows: EUR 3 000, EUR 4 500, EUR 6 000, EUR 9 500, EUR 13 000, EUR 18 500, EUR 27 500, EUR 35 500, EUR 47 500 and EUR 60 000.

MSCA Doctoral Networks: award criteria



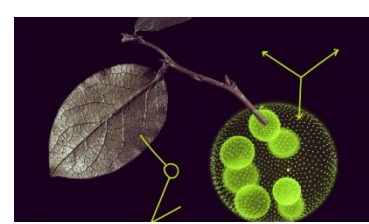
Excellence	Impact	Quality and efficiency of the implementation
Quality and pertinence of the project's research and innovation objectives	Contribution to structuring doctoral training at European level and strengthening European innovation capacity	Quality and effectiveness of the work plan, assessment of risks, and appropriateness of the effort assigned to work packages
Soundness of the proposed methodology	Credibility of the measures to enhance the career perspectives of researchers and contribution to their skills development	Quality, capacity and role of each participant, including hosting arrangements and extent to which the consortium as a whole brings together the necessary expertise
Quality and credibility of the training programme	Suitability and quality of the measures to maximise expected outcomes and impacts, as set out in the dissemination and exploitation plan, including communication activities	
Quality of the supervision	The magnitude and importance of the project's contribution to the expected scientific, societal and economic impacts	
50%	30%	20%

MSCA Doctoral Networks: Novelties in WP 2023 – 2024



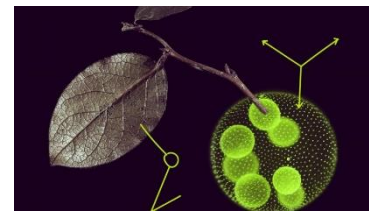
WP 2022	WP 2023-2024
Max project duration 48 months	Max project duration 48 months, except 60 months for JDs
Max fellowships duration 36 months	Max fellowships duration 36 months, except 48 months for JDs
Max EU contribution 360 pm for standard DN, 540 pm for IDs and JDs	Max EU contribution 540 pm for all implementation modes

MSCA Postdoctoral Fellowships



- **Mono-beneficiary action** to support **postdoctoral research** and careers
- **Two types of Fellowships:**
 - **European Fellowships:** researchers of any nationality moving within or coming to Europe
 - **Global Fellowships:** European nationals or long-term residents in Europe to do research abroad
- Continue funding **all research domains** including areas covered by **EURATOM**
- Improved guidance towards **career development** (plan & supervision)
- **Recruited researchers**
 - **Mobility rule** applies! No more than 12 months in the last 36 months
 - In possession of **PhD** degree at the call deadline
 - **Up to 8 years** of research experience after PhD at the call deadline, with **exceptions:**
 - Time spent **outside research, career breaks, work outside Europe** (for those reintegrating to Europe) will not be counted

MSCA Postdoctoral Fellowships



- **Who applies?**

- **Single legal entity** established in an EU Member State or HE Associated country (specific conditions for EURATOM areas), **jointly with the researcher**

- **Duration**

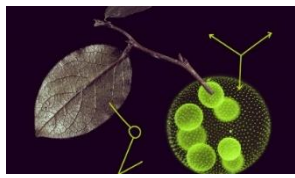
- **European Fellowships: 12-24 months**
- **Global Fellowships: 24-36 months** (12-24 outgoing + 12 months mandatory return phase in Europe)
- **Secondments worldwide up to 1/3 of the fellowship** duration (outgoing phase for Global Fellowships)
- Optional **additional placement of up to 6 months in a non-academic** European organization, at the end of the fellowship (EF/GF) to build bridges between sectors

- **Seal of Excellence** continues

- **Call:**

- 2022 closed. **Next call in May 2023**
- Restrict **resubmissions** with score less than 70% to the following year (as of 2022)

MSCA Postdoctoral Fellowships – Unit contributions



Contributions for recruited researchers Per person-month					Institutional unit contributions Per person-month	
Living allowance	Mobility allowance	Family allowance (if applicable)	Long-term leave allowance (if applicable)	Special needs allowance (if applicable)	Research, training and networking contribution	Management and indirect contribution
EUR 5 080	EUR 600	EUR 660	EUR 5 680 x % covered by the beneficiary	Requested unit ¹ x (1/number of months)	EUR 1 000	EUR 650

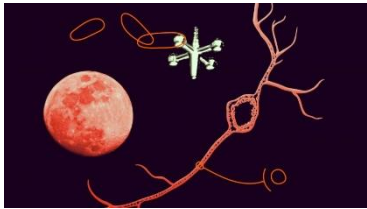
¹The pre-defined categories are as follows: EUR 3 000, EUR 4 500, EUR 6 000, EUR 9 500, EUR 13 000, EUR 18 500, EUR 27 500, EUR 35 500, EUR 47 500 and EUR 60 000.

MSCA Postdoctoral Fellowships: award criteria



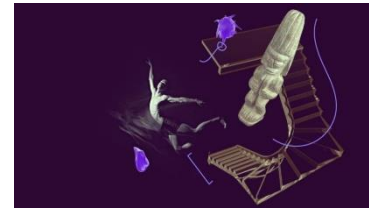
Excellence	Impact	Quality and efficiency of the implementation
Quality and pertinence of the project's research and innovation objectives (and the extent to which they are ambitious, and go beyond the state of the art)	Credibility of the measures to enhance the career perspectives and employability of the researcher and contribution to his/her skills development	Quality and effectiveness of the work plan , assessment of risks and appropriateness of the effort assigned to work packages
Soundness of the proposed methodology (including interdisciplinary approaches, consideration of the gender dimension and other diversity aspects if relevant for the research project, and the quality of open science practices)	Suitability and quality of the measures to maximise expected outcomes and impacts , as set out in the dissemination and exploitation plan, including communication activities	Quality and capacity of the host institutions and participating organisations , including hosting arrangements
Quality of the supervision, training and of the two-way transfer of knowledge between the researcher and the host	The magnitude and importance of the project's contribution to the expected scientific, societal and economic impacts	
Quality and appropriateness of the researcher's professional experience, competences and skills		
50%	30%	20%

MSCA Postdoctoral Fellowships: WP 2023-2024 Novelties



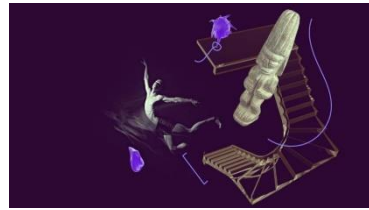
WP 2022	WP 2023-2024
	Clarify wording for EF/GF scope + clarification secondments max duration (+ 3 months at beneficiary in GF)
	Successful defence must be unconditional and take place before the call deadline
	Allow less than 50% part-time for medical reasons
LoC for associated partner hosting the optional placement	No LoC for associated partner hosting the placement required (only remaining LoC required for the associated partner hosting the GF outgoing phase)

MSCA Staff Exchanges



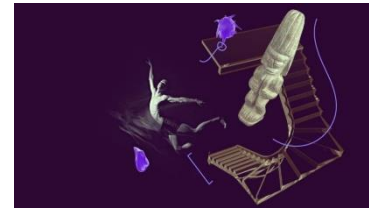
- **Multi-beneficiary action** to support **collaborative R&I activities through staff exchanges**
- **Target group:** any type of staff at any stage of career contributing to research activities (researchers, administrative & managerial staff, technicians, infrastructure operators...)
- **Focus** on **international, inter-sectoral, interdisciplinary secondments** leading to **knowledge transfer** between participating organisations and strengthening long-term **collaborations**. Emphasis on the added-value of the collaboration.
- **Who applies?**
 - **consortia** of universities, research institutions and research infrastructures, businesses including SMEs, and other socio-economic actors
 - **at least three independent legal entities in three different countries**, two of which established in a different EU Member State or Horizon Europe Associated Country.
 - If all participating organisations are from the same sector (i.e. either only academic or only non-academic), there must be at least one organisation from a non-associated Third Country

MSCA Staff Exchanges



- **Size: up to 360 person-months**
- **Duration**
 - **Programme:** max. 48 months (no change)
 - **Secondments:** between countries worldwide and between independent entities; **1-12 months** per staff member (independently of the number of organisations the staff is seconded to);
 - New: interdisciplinary secondments in the same sector possible within Europe (max 1/3 of the total person-months);
- Most international action under MSCA
- **Call:**
 - **2022:** 6 Oct 2022- 8 Mar 2023; 77,5 M€

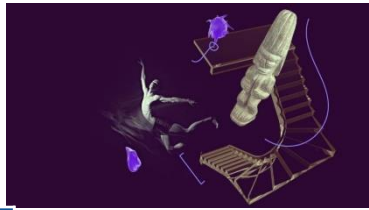
MSCA Staff Exchanges – Unit contributions



Contributions for seconded staff members Per person-month		Institutional unit contributions Per person-month	
Top-up allowance	Special needs allowance (if applicable)	Research, training and networking contribution	Management and indirect contribution
EUR 2 300	Requested unit¹ x (1/number of months)	EUR 1 300	EUR 1 000

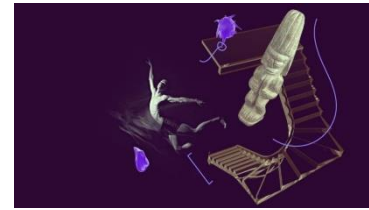
¹The pre-defined categories are as follows: EUR 3 000, EUR 4 500, EUR 6 000, EUR 9 500, EUR 13 000, EUR 18 500, EUR 27 500, EUR 35 500, EUR 47 500 and EUR 60 000.

MSCA Staff Exchanges: award criteria



Excellence	Impact	Quality and efficiency of the implementation
<p>Quality and pertinence of the project's research and innovation objectives (and the extent to which they are ambitious, and go beyond the state of the art)</p>	<p>Developing new and lasting research collaborations, achieving transfer of knowledge between participating organisations and contributing to improving research and innovation potential at the European and global level</p>	<p>Quality and effectiveness of the work plan, assessment of risks, and appropriateness of the effort assigned to work packages</p>
<p>Soundness of the proposed methodology (including i3 approaches, consideration of the gender dimension and other diversity aspects, and the quality of open science practices)</p>	<p>Credibility of the measures to enhance the career perspectives of staff members and contribution to their skills development</p>	<p>Quality, capacity and role of each participant, including hosting arrangements and extent to which the consortium as a whole brings together the necessary expertise</p>
<p>Quality of the proposed interaction between the participating organisations in light of the research and innovation objectives</p>	<p>Suitability and quality of the measures to maximise expected outcomes and impacts, as set out in the dissemination and exploitation plan, including communication activities</p> <p>The magnitude and importance of the project's contribution to the expected scientific, societal and economic impacts</p>	
<p>50%</p>	<p>30%</p>	<p>20%</p>

MSCA Staff Exchanges: WP 2023-2024 Novelties



WP 2022	WP 2023-2024
	Clarify secondments must involve physical mobility (virtual mobility not allowed)
	Secondments exceptions for branches/departments established in TCs without legal personality (secondments to/from countries where they are physically eligible not eligible)

MSCA COFUND



- **Mono-beneficiary action** to **co-fund** new or existing national, regional, institutional schemes for **doctoral** training and **postdoctoral** fellowships
- **Focus**
 - Spread **best practices** of the MSCA by promoting **high standards** in the recruitment process and **excellent working conditions**
 - Introduce **sustainable structuring effects**, by promoting excellent and sustainable research training
 - Encourage **synergies** with Cohesion policy funds as well as the Recovery and Resilience Facility. Bottom-up, but programmes could focus on specific **disciplines**, notably when based on RIS³.
- **Target groups**
 - **Doctoral candidates**, i.e. researchers without a doctoral degree at the deadline of the co-funded programme's call; mandatory enrolment in a doctoral programme
 - **Postdoctoral researchers**, i.e. researchers with a doctoral degree at the deadline of the co-funded programme's call
 - Each application can only cover one of the two types of programmes (doctoral/postdoctoral).
 - **Researchers apply to vacancies published** by the beneficiary or other partners
- **Who applies?**
 - **Single legal entity** established in an EU Member State or HE Associated country
 - A minimum of three researchers must be recruited.

MSCA COFUND



- **Career Development Plan**

- To be jointly established by the supervisor and each recruited researcher upon recruitment. Revised (and updated where needed) within 18 months

- **Co-funding**

- Max **10 M€** per beneficiary per call (unchanged)
- The EU contribution covers **minimum remuneration** and can be used more **flexibly**

- **Duration**

- **Programme:** max. 60 months (unchanged)
- **Fellowship:** min 3 months
- **Secondments:** up to 1/3 of the fellowship duration

- Introduction of an MSCA Cofund **Seal of Excellence** for applications scoring $\geq 85\%$

- **Call:**

- **2022:** 11 Oct 2022 – 9 Feb 2023; 95 M€

MSCA COFUND – Unit contributions



Contributions for recruited researchers and institutional contributions Per person-month

	COFUND allowance	Long-term leave allowance (if applicable)	Special needs allowance (if applicable)
Doctoral Programmes	EUR 2 800	EUR 2 800 x % covered by the beneficiary	Requested unit ¹ x (1/number of months)
Postdoctoral Programmes	EUR 3 980	EUR 3 980 x % covered by the beneficiary	Requested unit ¹ x (1/number of months)

¹The pre-defined categories are as follows: EUR 3 000, EUR 4 500, EUR 6 000, EUR 9 500, EUR 13 000, EUR 18 500, EUR 27 500, EUR 35 500, EUR 47 500 and EUR 60 000.

Minimum remuneration applies:

EUR 2 800 for Doctoral researcher, EUR 3 980 for Postdoctoral researcher

MSCA COFUND: award criteria



Excellence	Impact	Quality and efficiency of the implementation
<p>Quality and novelty of the selection / recruitment process for the researchers (transparency, composition and organisation of selection committees, evaluation criteria, equal opportunities, the gender dimension and other diversity aspects) and quality and attractiveness of the appointment conditions, including competitiveness of the salary for the standards of the hosting countries</p>	<p>Strengthening human resources good practices at institutional, regional, national or international level, in particular through aligning the practices of participating organisations with the principles set out by the EU for human resources development in research and innovation</p>	<p>Quality and effectiveness of the work plan, management structures, assessment of risks and appropriateness of the effort assigned to work packages</p>
<p>Quality and novelty of the research options offered by the programme in terms of science, interdisciplinarity, inter-sectorality and level of transnational mobility. Quality of open science practices</p>	<p>Credibility of the proposed measures to enhance the career perspectives and employability of researchers and contribution to their skills development</p>	<p>Quality and capacity of the host institution(s) and participating organisations (where appropriate), including hosting arrangements and extent to which they bring together the necessary expertise to successfully implement the research training programme</p>
<p>Quality, novelty and pertinence of the research training programme (including transferable skills, inter/multidisciplinary, inter-sectoral and gender as well as other diversity aspects)</p>	<p>Suitability and quality of the measures to maximise the expected outcomes and impacts, as set out in the dissemination and exploitation plan, including communication activities</p>	
<p>Quality, novelty and pertinence of the supervision, career guidance and career development arrangements</p>		
50%	30%	20%

MSCA COFUND: WP 2023-2024 Novelties



WP 2022	WP 2023-2024
<p>Vacancy notice must include the gross salary (not including employer's social contribution)</p>	<p>Vacancy notice must mention if the published rates include all employer and employee's taxes and contributions. If possible, the gross salary (net salary+ employee's taxes and contributions) should be published</p>
<p>Implementing partners means third parties receiving financial support from the beneficiary and implementing the COFUND Doctoral or Postdoctoral programmes. Implementing partners can employ the researchers</p>	<p>Implementing partners means third parties implementing the MSCA COFUND Doctoral or Postdoctoral programmes by recruiting researchers. Implementing partners can receive financial support from the beneficiary.</p>

What is funded?

	Participating entity	MSCA fellow***	
DN	Research, networking, training contributions	1600 €	
	Management and indirect contributions	1200 €	
PF	Research, networking, training contributions	1000 €	
	Management and indirect contributions	650 €	
SE	Research, networking, training contributions	1300 €	
	Management and indirect contributions	1000 €	
COFUND	COFUND allowance, DP****		
	COFUND allowance, PP****		
		Living allowance*	3400 €
		Mobility allowance	600 €
		Family allowance	660 €
		Long-term leave allowance**	4000 €
		Living allowance*	5080 €
		Mobility allowance	600 €
		Family allowance	660 €
		Long-term leave allowance**	5680 €
		Top-up allowance	2300 €
		Long-term leave allowance**, DP	2800 €
		Long-term leave allowance**, PP	3980 €

(*) The living allowance is multiplied by a country correction coefficient

(e.g. 103,3% Japan, 125,4% Sweden)

(**) Long-term leave allowance, if applicable.

(***) Special needs allowance allowance, if applicable (3 000 - 60 000 €).

(****) Minimum remuneration applies in COFUND:

2 800 € for Doctoral researcher, 3 980 € for Postdoctoral researcher

MSCA Call Calendar 2023

Action	Opening	Deadline	Budget (EUR million)
Doctoral Networks	30 May 2023	28 November 2023	434.80
Postdoctoral Fellowships	12 April 2023	13 September 2023	260.47
Staff Exchanges	5 October 2023	24 February 2024	78.49
COFUND	10 October 2023	8 February 2024	99.56

Links

- **Marie Skłodowska-Curie Actions Website**
https://ec.europa.eu/research/mariecurieactions/node_en
- **Factsheet, Marie Skłodowska-Curie actions, 2021-2027**
<https://data.europa.eu/doi/10.2766/128028>
- **Funding and Tenders Portal (applications, documents, partner search)**
<https://ec.europa.eu/info/funding-tenders/opportunities/portal/screen/programmes/horizon>
- **Horizon Europe MSCA Work Programme 2023-2024**
https://ec.europa.eu/info/funding-tenders/opportunities/docs/2021-2027/horizon/wp-call/2023-2024/wp-2-msca-actions_horizon-2023-2024_en.pdf
- **Euraxess (PhD and postdoctoral vacancies, more information)**
<https://euraxess.ec.europa.eu/>
- **European Charter and Code for Researchers**
<https://euraxess.ec.europa.eu/jobs/charter-code-researchers>
- **MSCA Guidelines on Supervision**
<https://data.europa.eu/doi/10.2766/508311>
- **MSCA Green Charter**
<https://data.europa.eu/doi/10.2766/720690>
- **Horizon Dashboard**
<https://ec.europa.eu/info/funding-tenders/opportunities/portal/screen/opportunities/horizon-dashboard>
- **Become an Expert**
<https://ec.europa.eu/info/funding-tenders/opportunities/portal/screen/work-as-an-expert>
- **Contact:** EAC-UNITE-C2@ec.europa.eu



@MSCActions



@Marie.Curie.Actions

Funding opportunities

- All calls are published on the **Funding and Tender Opportunities Portal**
- Applications are submitted through the portal:
 - Find your call
 - Sign in to the portal and register your organisation (get a PIC number)
 - Find partners
 - Apply

<https://ec.europa.eu/info/funding-tenders/opportunities/portal/>



European Commission | Funding & tender opportunities
Single Electronic Data Interchange Area (SEDIA)

SEARCH FUNDING & TENDERS ▾ HOW TO PARTICIPATE ▾ PROJECTS & RESULTS WORK AS AN EXPERT SUPPORT ▾

⚠ Proposal Submission System will be unavailable on **Monday 22th from 17:30 to 20:00 (CET)**, while system maintenance is being performed. We apologize for any inconvenience this may cause.

Find calls for proposals and tenders

Marie Skłodowska-Curie Actions

Key resources and guidance

- Check all **guidance documents** available on [Funding and Tenders Portal](#):
 - Guide for applicants: overview of rules, financial aspects, etc.
 - MSCA Work Programme and annexes
 - Proposal templates
 - Model Grant Agreements
 - Horizon Europe Programme Guide
 - Online manual on how to submit an application
 - Frequently Asked Questions
 - Partner search
- Ask for advice to your **MSCA [National Contact Point](#)** where available
- Submit specific queries to the **Research Enquiry Service** (funding, validation of participants, etc.)

Nothing in life is to be feared, it is only to be understood. Now is the time to understand more, so that we may fear less.

Marie Skłodowska-Curie



Thank you!

#MSCA #HorizonEU

@MSCAactions

<https://ec.europa.eu/research/mariecurieactions/>



© European Union 2021

Unless otherwise noted the reuse of this presentation is authorised under the [CC BY 4.0](https://creativecommons.org/licenses/by/4.0/) license. For any use or reproduction of elements that are not owned by the EU, permission may need to be sought directly from the respective right holders. Image sources: [iStockphoto.com/Unsplash](https://www.istockphoto.com/)

