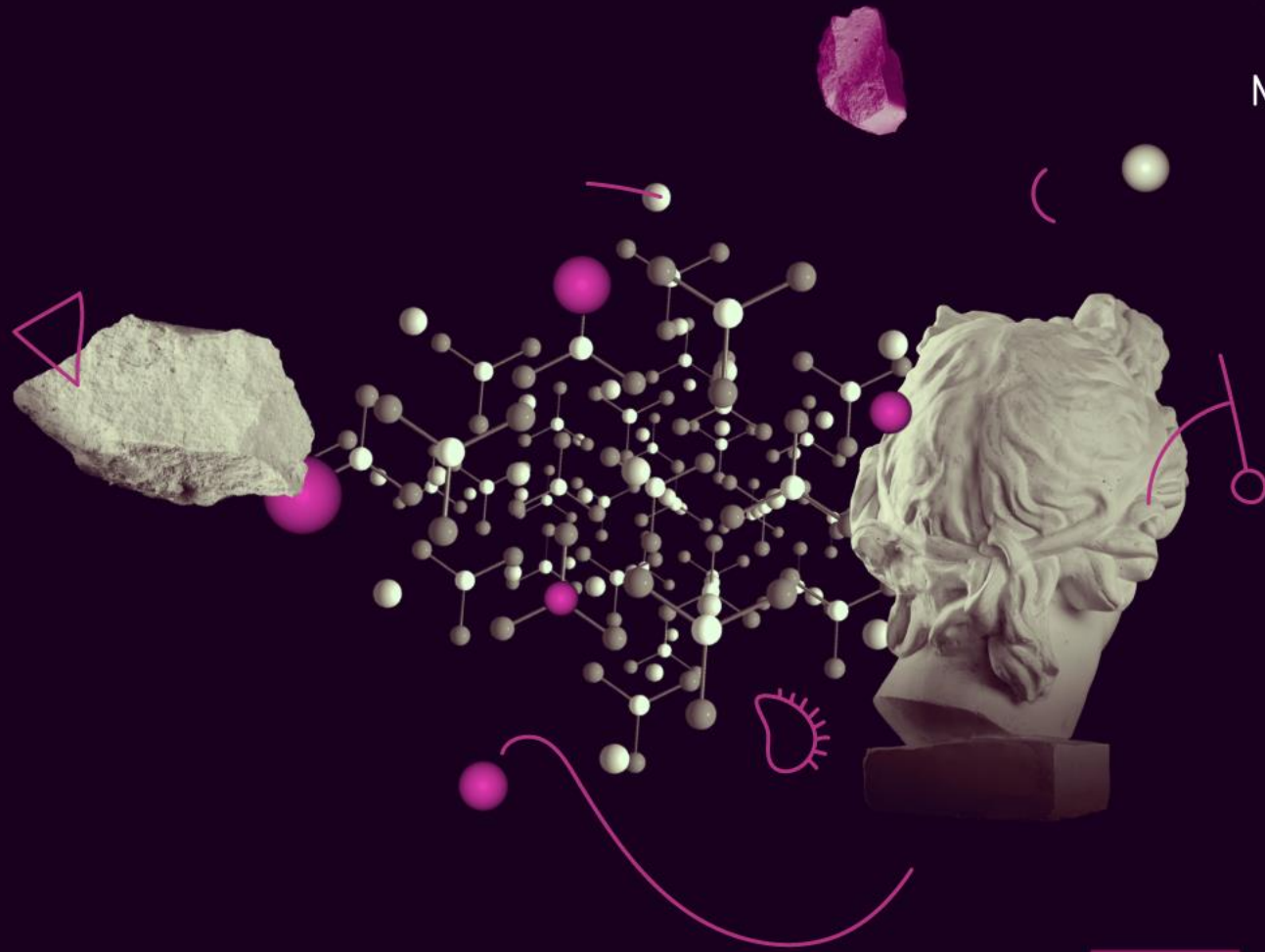




MSCA
Marie Skłodowska-Curie Actions
Developing talents, advancing research



Staff Exchanges

Eleftheria Lykouressi and Vasiliki Exarchou
Unit A3
European Research Executive Agency

Marie Skłodowska-Curie Actions



@REA_research, @MSCAactions

image source: iStockphoto.com

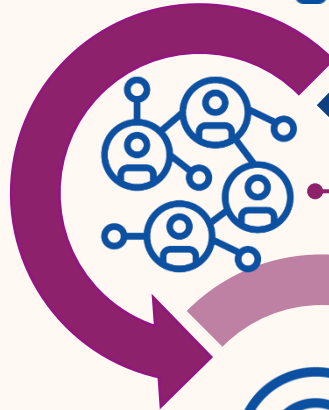
Overview



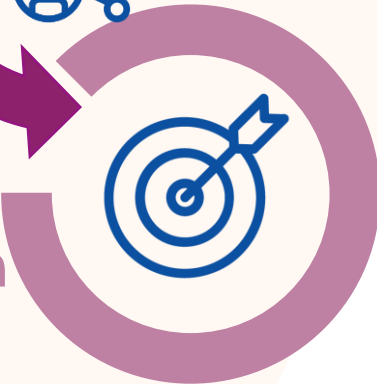
1. Policy background



2. Staff Exchanges Main features



3. Proposal submission & evaluation





Staff Exchanges

Policy background



Pillar I: Excellent Science

Reinforcing and extending the excellence of the Union's science base

European Research Council

Frontier research by the best researchers and their teams

€16 billion

Marie Skłodowska Curie Actions

Equipping researchers with new knowledge and skills through mobility and training

€6.6 billion

Research Infrastructures

Integrated and inter-connected world-class research infrastructures

€2.4 billion

Marie Skłodowska-Curie Actions (MSCA)

The MSCA have
5 main actions

Doctoral Networks

implement doctoral programmes (including joint doctorates and industrial doctorates) **by international partnerships** of organisations from different sectors. They train highly-skilled doctoral candidates, stimulate their creativity, enhance their innovation capacities and boost their employability in the long-term.

Postdoctoral Fellowships

support researchers' careers and foster excellence in research and innovation.

Researchers holding a PhD can carry out their research activities, acquire new skills and develop their careers abroad, whilst developing competences in non-academic sectors and working within interdisciplinary teams.

Staff Exchanges

encourage short-term international and inter-sectoral exchanges of research and innovation staff through sustainable, collaborative projects in Europe and beyond. By doing so, they enhance knowledge and skills transfer and increase organisations' research and innovation capacities.

MSCA and Citizens

brings research and researchers closer to children, families and the public at large through the European Researchers' Night - the annual research communication and promotion event taking place at the end of September across EU Member States and Horizon Europe Associated Countries.

COFUND

co-finances regional, national and international doctoral and postdoctoral programmes for researchers' training and career development. The COFUND action spreads MSCA's best practices by setting high standards and excellent working conditions, and boosts training and international, interdisciplinary and inter-sectoral mobility.



Staff Exchanges

Main features



Objectives



International, inter-sectoral and interdisciplinary mobility of R&I staff (“secondments”)

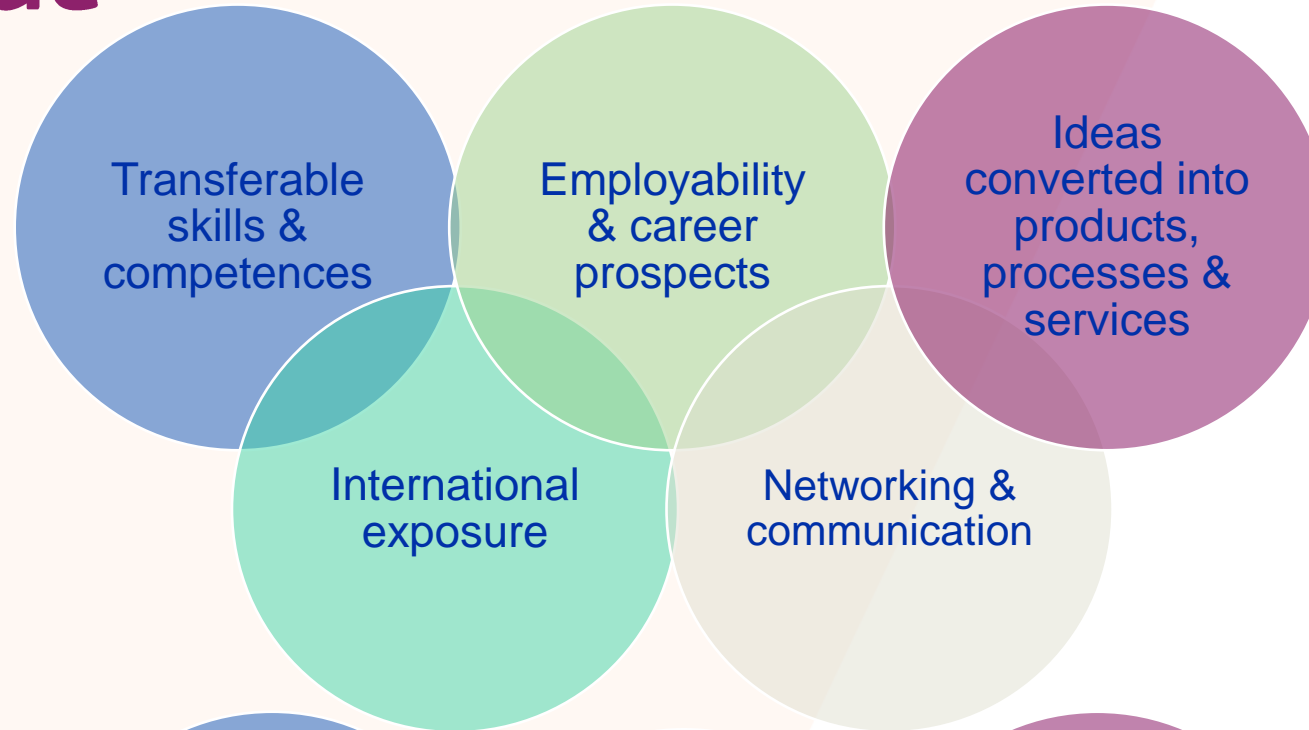
Knowledge transfer between participating organisations

Collaboration between the academic and non-academic sectors (including SMEs)

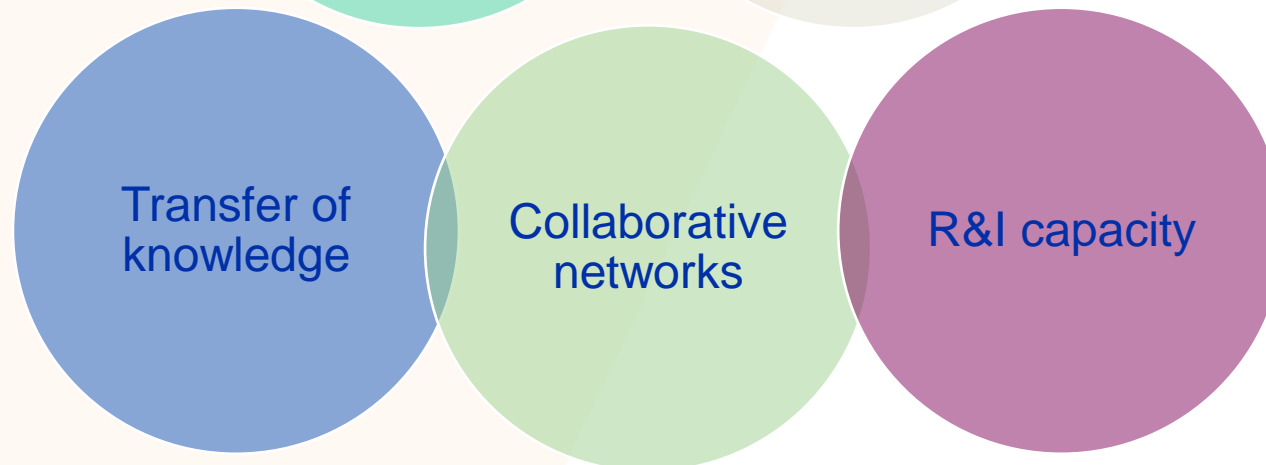
Cooperation across the globe

Added value

Staff members



Organisations



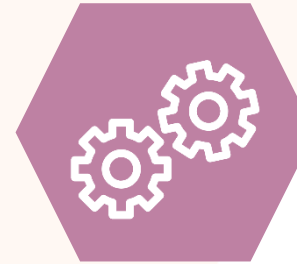
Eligible participants

Academic sector



Consortium of min. **3 legal entities in 3 different countries**, 2 of which in a different EU Member State or HE Associated Country

Non-academic sector



If organisations from the **same sector**, there must be at least 1 organisation from a non-associated Third Country*

* Secondments within EU MS or HE AC must be between different sectors (between academic and non-academic), except for interdisciplinary secondments, which must be limited to a maximum of 1/3 of the total implemented months.

“Secondments are open for researchers at any career stage (from doctoral candidates to postdoctoral researchers), as well as administrative, managerial and technical staff supporting R&I activities under the action.”

Eligible staff



Seconded staff members



Any type of staff involved in R&I activities (researchers, administrative staff, managerial staff, technical staff)

Each staff member is seconded for a period of **1 to 12 months** (may be split into several stays)

Researchers at any career stage (from doctoral candidates to postdoctoral researchers)

Staff needs to be devoted **full-time** to the action during the secondment

Actively engaged in research and/or innovation activities for at least **1 month** prior at the sending institution

After the secondment, staff should **return to their sending organisation**

Eligible exchanges/secondments

"SENDING"
(sending staff
members
from organization)

"HOSTING"
(receiving seconded staff members)

	Academic organisation in MS/AC (1)	Non-academic organisation in MS/AC (2)	Associated Partners eligible for funding	Associated Partners non-eligible for funding
Academic organisation in MS/AC (1)	1/3	✓	✓	✓
Non-academic organisation in MS/AC (2)	✓	1/3	✓	✓
Associated Partners* eligible for funding	✓	✓	✗	✗
Associated Partners non-eligible for funding	✗	✗	✗	✗

1/3 This symbol refers to same sector secondments up to 1/3 of the total implemented secondments funded by the EU as long as they are demonstrated to be interdisciplinary.

* Associated Partners eligible for funding (see List of Participating Countries in Horizon Europe)

First level MSCA keywords

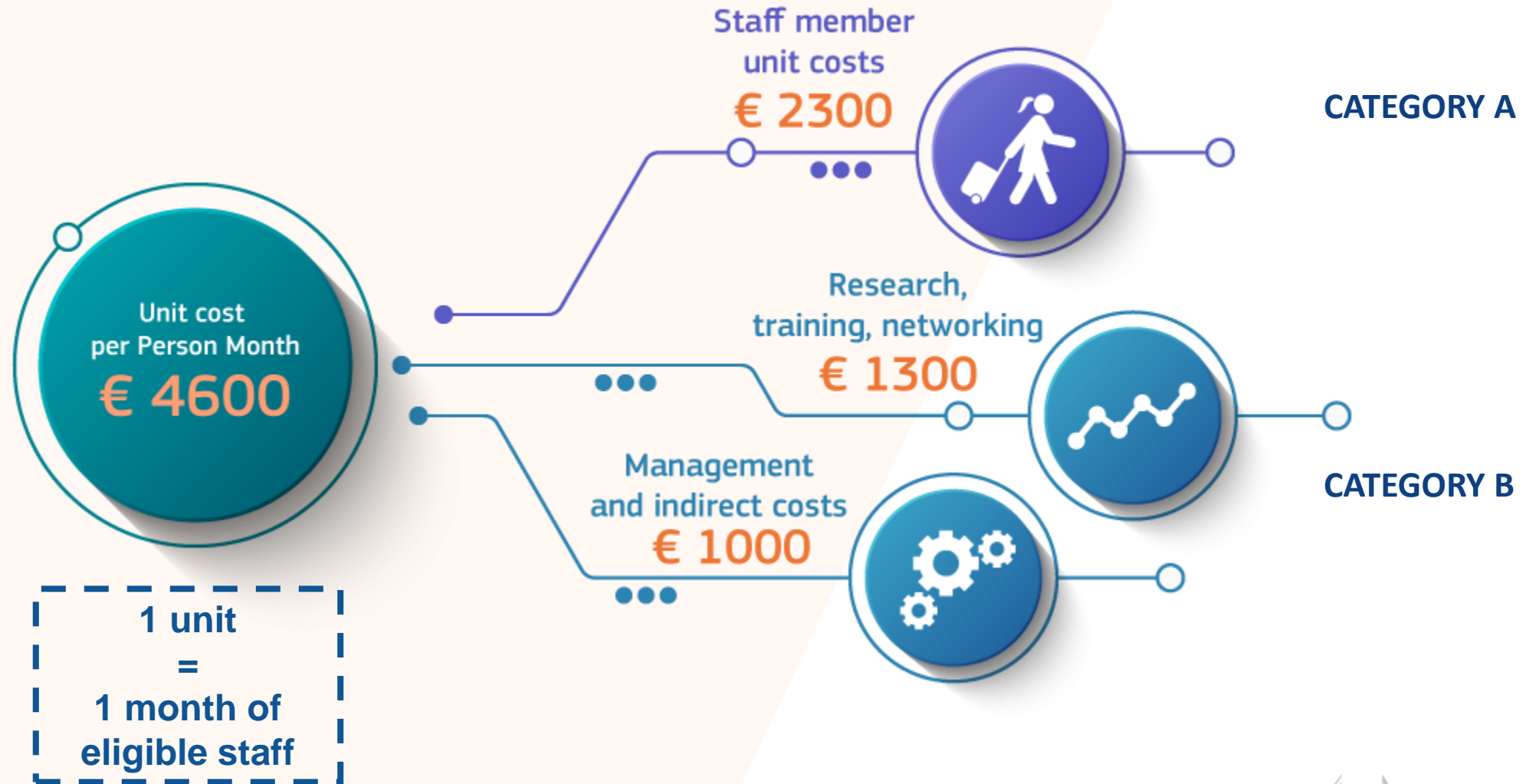
Chemistry (CHE)

C1-Inorganic Chemistry

- Catalysis
- Coordination chemistry
- Inorganic and nuclear chemistry
- NMP Non-Metallic Materials & basic processes
- Organometallic chemistry
- Radiation and nuclear chemistry

C2-Organic, Polymer and Molecular Chemistry

What does Staff Exchanges fund?



Key features – summary



DURATION

4 years (48 months)
360 PM per project



SECONDMENTS

1-12 months per staff
Interdisciplinary
secondments: same
sector, within Europe
for max 1/3 PM



UNIT COST

4600€ total
2 categories:
2300€ - Staff allowance
2300€ - organisation



BUDGET

EU funding
average
75,5 Mio€/call

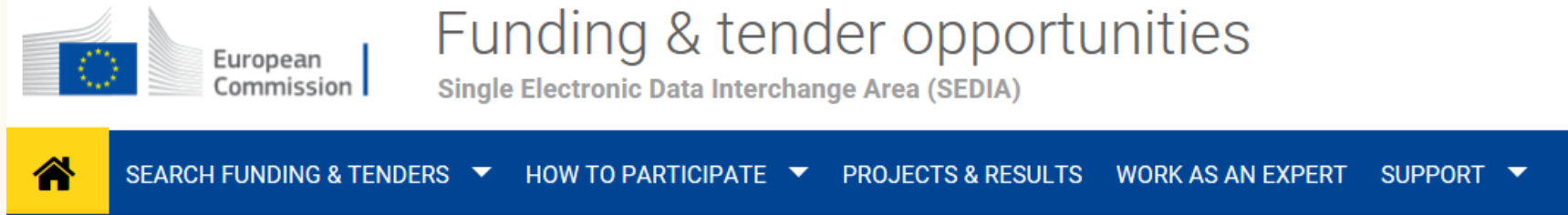


Staff Exchanges

Proposal submission & evaluation

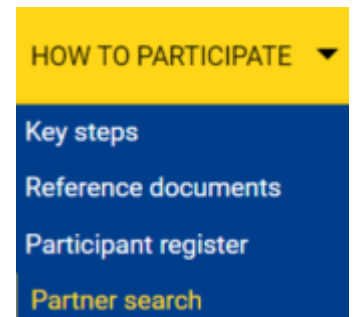
Proposal Submission

<https://ec.europa.eu/info/funding-tenders/opportunities/portal/>




All calls are published on the **Funding and Tender Opportunities Portal**. Applications are submitted through the portal:

- Find your call
- **Sign in to the portal and register your organisation (get a PIC number)**
- Find partners
- Apply!



MSCA SE call is open!

 Due to a system deployment, Request for Specific Contract preparation workflow, procurement workflow and Submission of tenders services applications will be unavailable Wednesday, 19/10/2022 from 18:00 until 19:00 (Brussels time). We apologize for the inconvenience caused. [X](#)

Staff exchanges 

Match whole words only

GRANTS TENDERS

Submission status

Forthcoming Open for submission (1) Closed

Programming period

Select a Programme period...


Filter by Programme / Programme group

Select a Programme...

Filter by call

Select a Call...

Funding and tenders (1)

[Need help?](#)   Sort by:

MSCA Staff Exchanges 2022

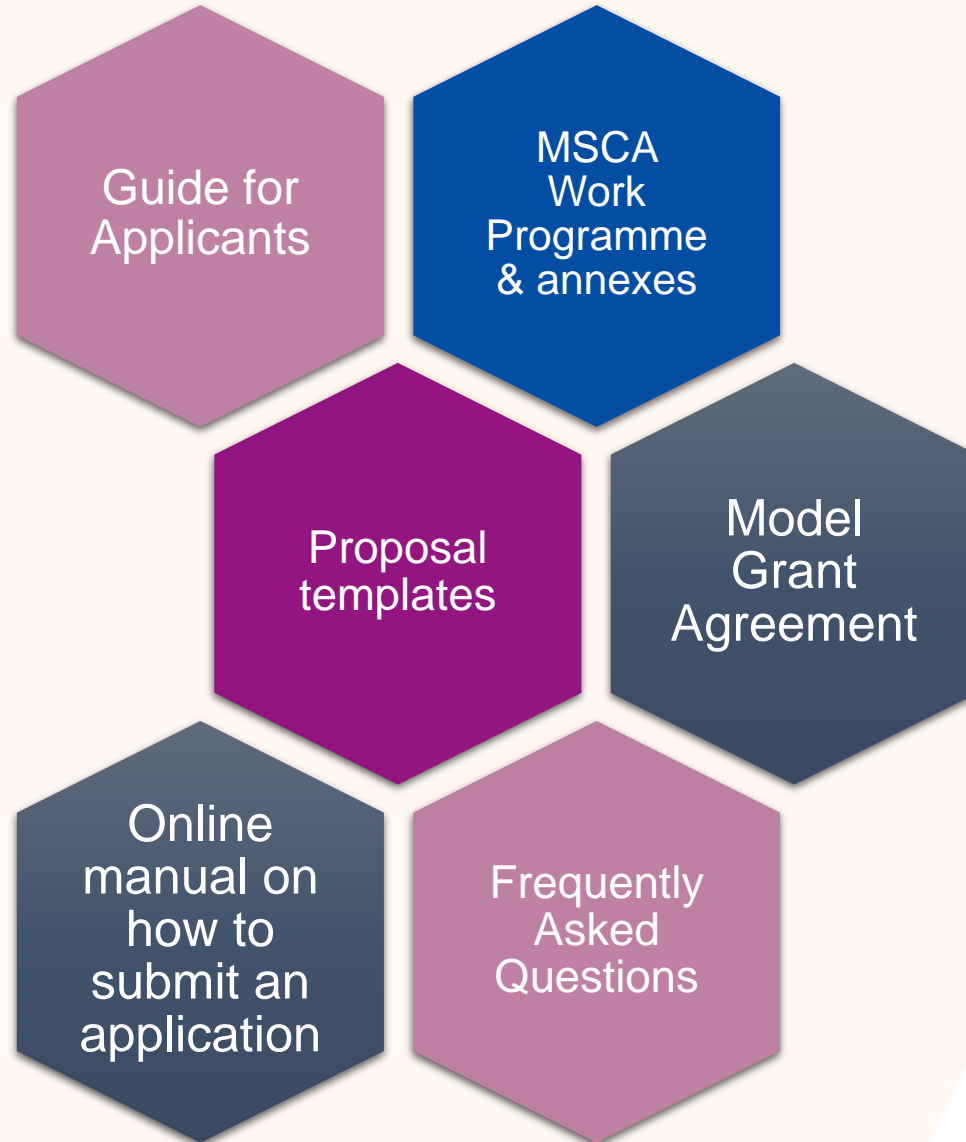
HORIZON-MSCA-2022-SE-01-01

[Call for proposal](#) [Grant](#)

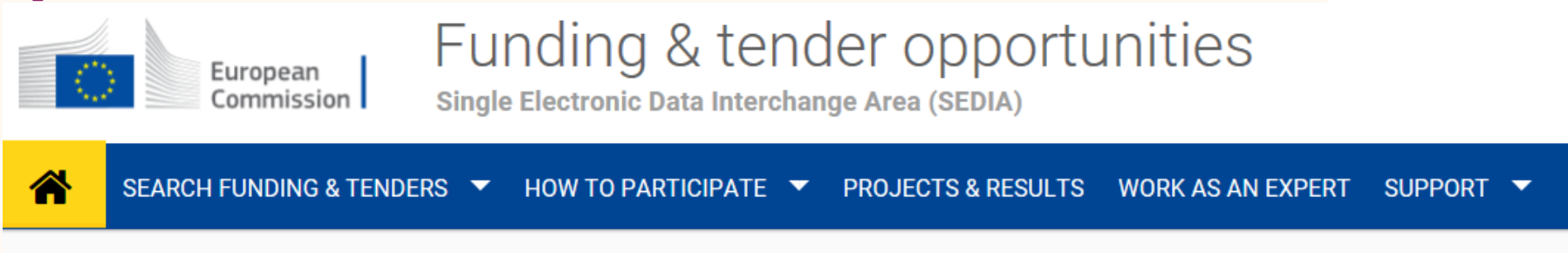
Programme	Horizon Europe (HORIZON)	Status	Open for submission
Type of action	HORIZON TMA MSCA Staff Exchanges	Deadline model	single-stage
Opening date	06 October 2022	Deadline date	08 March 2023 17:00:00 Brussels time

 1

Reference Documents

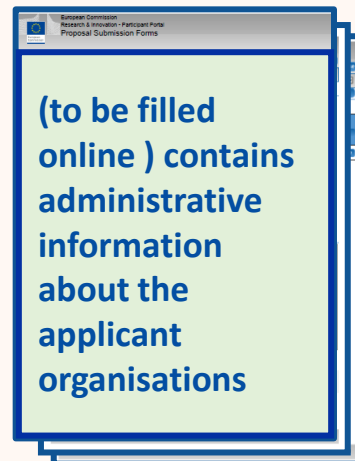


Proposal documents

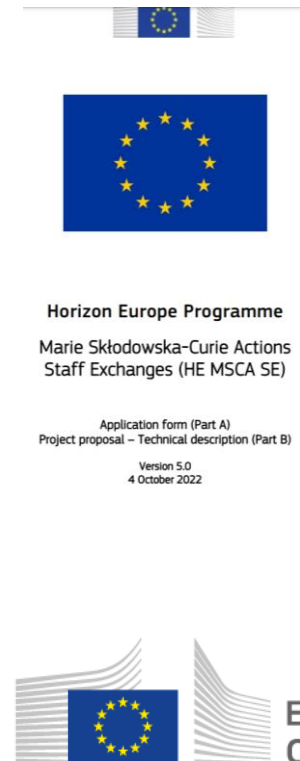
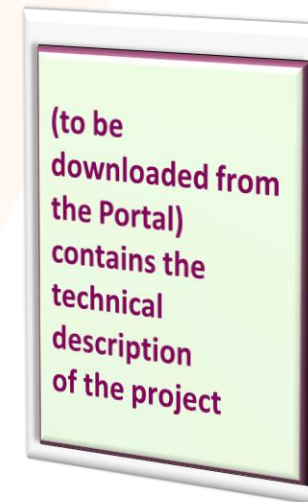


Apply here!

**Part A
(structured data)**



**Part B1 and B2
(description of action)**



Evaluation criteria

Excellence	Impact	Quality and efficiency of the implementation
Quality and pertinence of the project's research and innovation objectives (and the extent to which they are ambitious, and go beyond the state of the art)	Developing new and lasting research collaborations , achieving transfer of knowledge between participating organisations and contributing to improving research and innovation potential at the European and global level	Quality and effectiveness of the work plan , assessment of risks , and appropriateness of the effort assigned to work packages
Soundness of the proposed methodology (including i3 approaches, consideration of the gender dimension and other diversity aspects, and the quality of open science practices)	Credibility of the measures to enhance the career perspectives of staff members and contribution to their skills development	Quality, capacity and role of each participant, including hosting arrangements and extent to which the consortium as a whole brings together the necessary expertise
Quality of the proposed interaction between the participating organisations in light of the research and innovation objectives	Suitability and quality of the measures to maximise expected outcomes and impacts , as set out in the dissemination and exploitation plan, including communication activities	
	The magnitude and importance of the project's contribution to the expected scientific, societal and economic impacts	
50%	30%	20%



Next MSCA SE calls

Call	2022	
	Opening Closing	Budget (M€)
Staff Exchanges	06/10/2022 08/03/2023	77,5



**~ + 7% more
budget vs
2021**

Tips and tricks

Closely follow the call requirements

Be in line with the action's objectives and expected outcomes

Follow available guidelines

Use the structure provided in the template and address all the evaluation criteria

Highlight the EU dimension

Show that your proposal addresses EU policy priorities and/or societal challenges

Get a second opinion

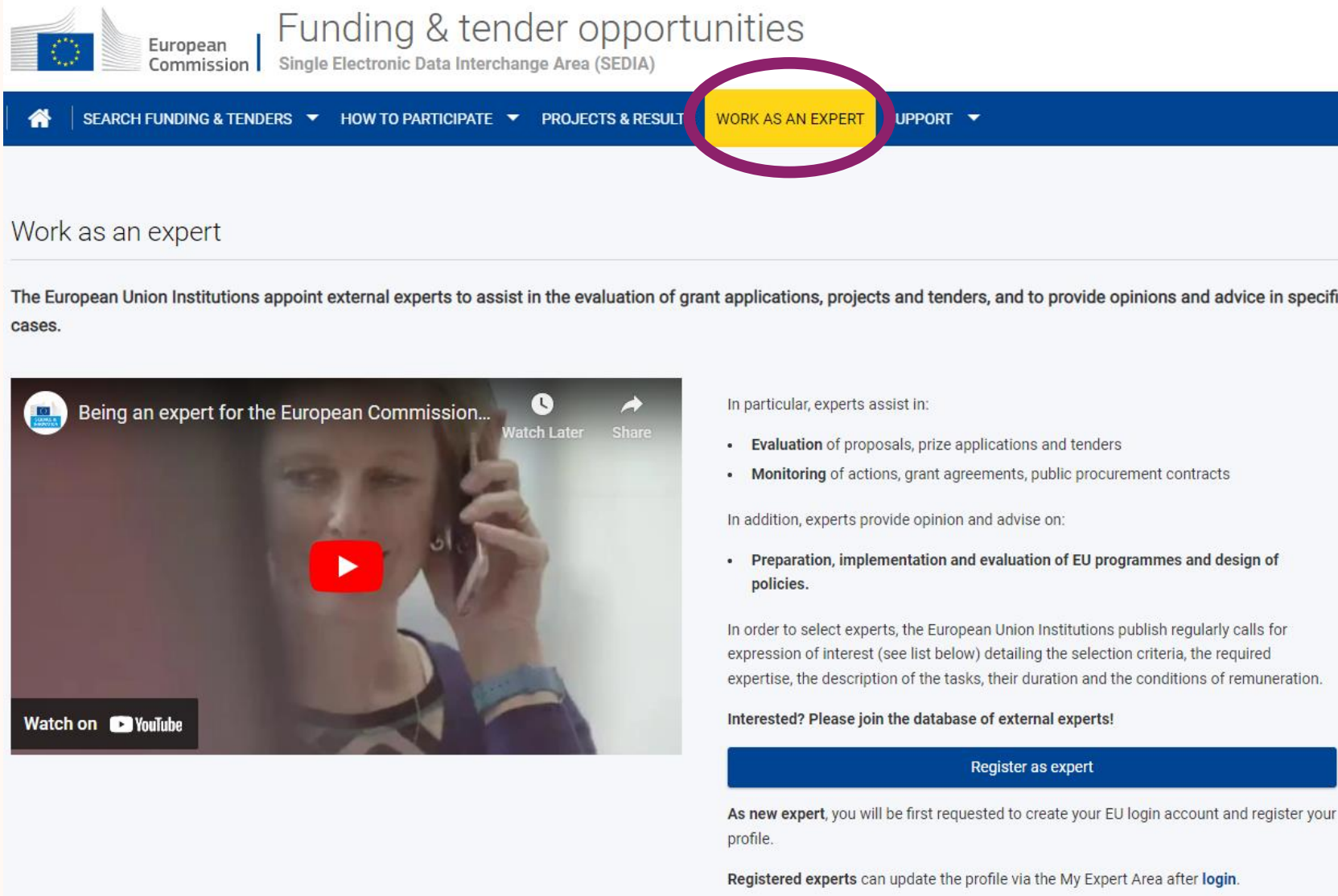
Have your proposal proof-read by a colleague and pre-screened by your NCP

Sustainability of collaboration

Describe the benefits of cooperation and how they can go beyond this project

Contact your National Contact Point (NCP)

Work as an Expert



The screenshot shows the top navigation bar of the European Commission website. The 'WORK AS AN EXPERT' link is highlighted with a purple circle. Below the navigation bar, the page title 'Work as an expert' is displayed. The main content area includes a video player with the title 'Being an expert for the European Commission...' and a 'Watch on YouTube' button. To the right of the video, there is a list of tasks that experts assist in, followed by a 'Register as expert' button and a brief description of the registration process.

European Commission | Funding & tender opportunities
Single Electronic Data Interchange Area (SEDIA)

SEARCH FUNDING & TENDERS ▾ HOW TO PARTICIPATE ▾ PROJECTS & RESULTS WORK AS AN EXPERT SUPPORT ▾

Work as an expert

The European Union Institutions appoint external experts to assist in the evaluation of grant applications, projects and tenders, and to provide opinions and advice in specific cases.

Being an expert for the European Commission... Watch Later Share

Watch on YouTube

In particular, experts assist in:

- **Evaluation** of proposals, prize applications and tenders
- **Monitoring** of actions, grant agreements, public procurement contracts

In addition, experts provide opinion and advise on:

- **Preparation, implementation and evaluation of EU programmes and design of policies.**

In order to select experts, the European Union Institutions publish regularly calls for expression of interest (see list below) detailing the selection criteria, the required expertise, the description of the tasks, their duration and the conditions of remuneration.

Interested? Please join the database of external experts!

[Register as expert](#)

As **new expert**, you will be first requested to create your EU login account and register your profile.

Registered experts can update the profile via the My Expert Area after **login**.

<https://ec.europa.eu/info/funding-tenders/opportunities/portal/screen/work-as-an-expert>

Next info session

Join our online info session and learn more about MSCA Staff Exchanges!

SAVE THE DATE

 **Wednesday 7 December 2022**

Via the webstream link

Q&A and polls available via Slido! (event code #SE22)

The info session will be in English. Participation is free.



Thank you!

European Research Executive Agency

#MSCA #HorizonEU

 **@REA_research @MSCAactions**

https://rea.ec.europa.eu/funding-and-grants/horizon-europe-marie-sklodowska-curie-actions_en



© European Union 2021

Unless otherwise noted the reuse of this presentation is authorised under the [CC BY 4.0](https://creativecommons.org/licenses/by/4.0/) license. For any use or reproduction of elements that are not owned by the EU, permission may need to be sought directly from the respective right holders. Image sources: [iStockphoto.com/Unsplash](https://www.istockphoto.com/)



European
Commission