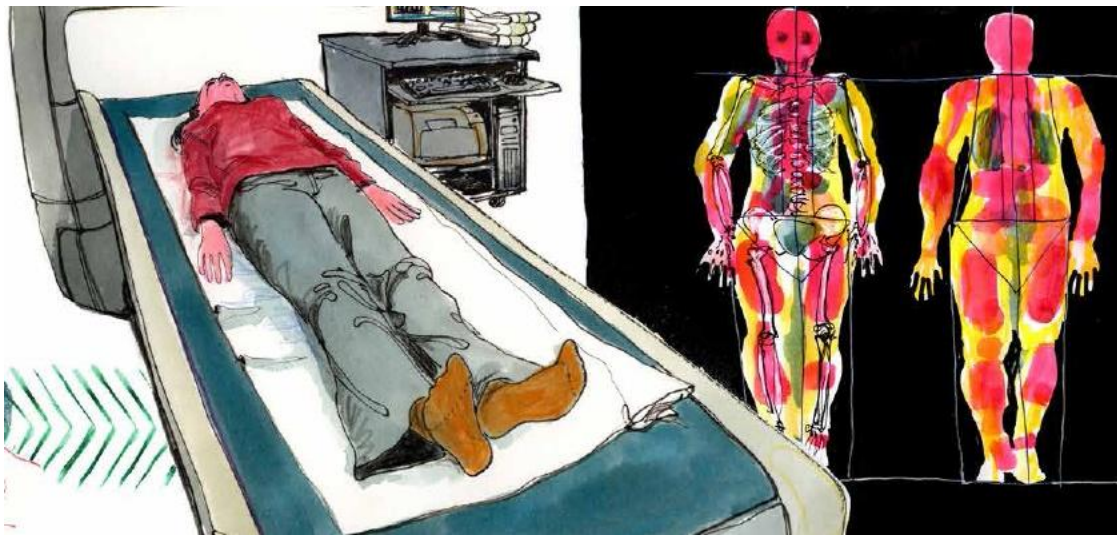


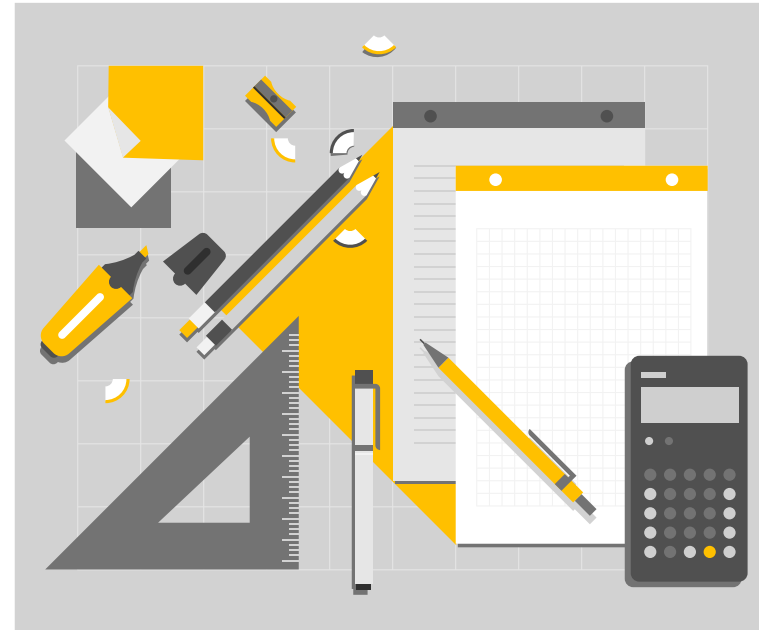
Unlocking Health Research & Innovation through Co-Creation – the IDIBAPS Perspective

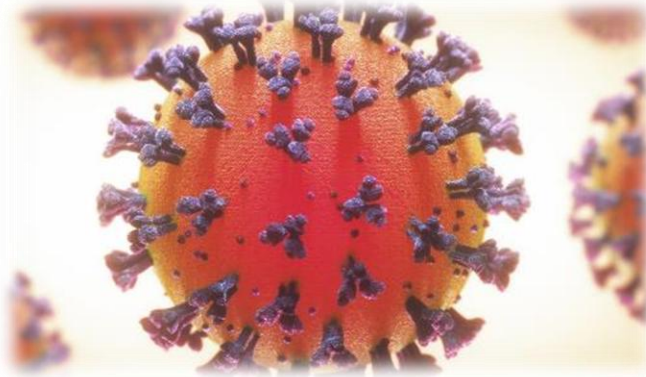
Morning Health Talks 2025

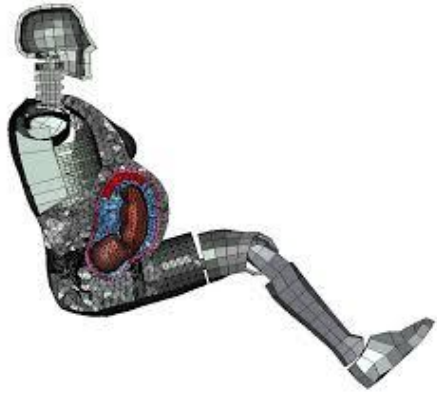
Michela Bertero, PhD, Strategy Director



- Why is co-creation relevant in health Research & Innovation?
- The Campus Clínic Barcelona as an example of health ecosystem
- Examples of co-creation and collaborative initiatives
- Future projects







Crash test dummies



Facial recognition



Cognitive-behavioural therapy



Hearth diseases in
diverse populations



GMOs social perception



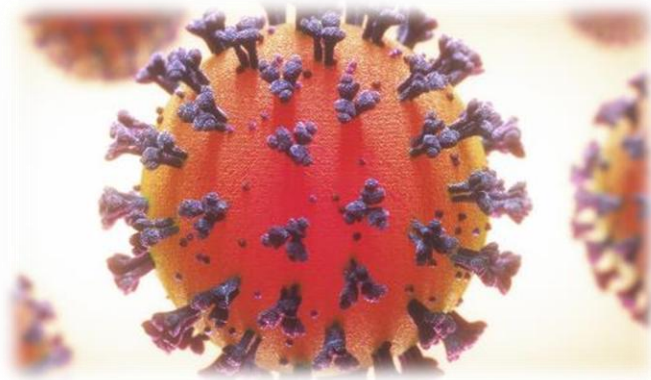
Unmet clinical needs



A need to transform the
relationship between Science
and Society



“Responsible
Research and
Innovation”



“Open Science”

“Co-creation”





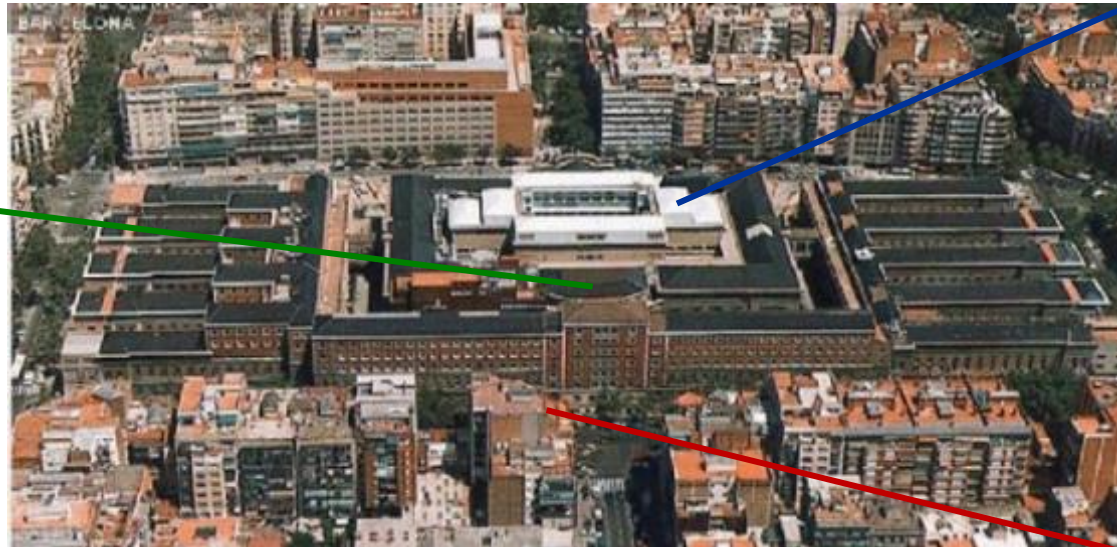
- Collaborative innovation ecosystems
- Cross-sectoral collaboration
- Inclusive policy design
- Stakeholder engagement
- Co-creation



Campus Clínic Barcelona

Hospital Clínic

- Community hospital for ~450K people (adults)
- Specialized hospital of high technology and complexity
- 850 beds; 51.000 admissions; 785.000 outpatient visits; 160.000 emergencies; 26.000 surgeries
- 8.000 Health professionals
- €800M budget



University of Barcelona (UB)

- Funded in 1450, the oldest in Catalonia and Spain
- Among 50 top universities in Europe
- 16 faculties, Doctoral School
- >60.000 students
- Faculty of Medicine

IDIBAPS

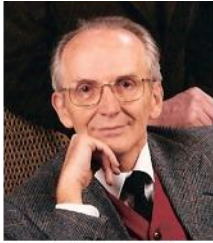
- Founded in 1996
- >2.000 professionals
- ~100 Research groups
- 7 Core Facilities
- >2.000 publications
- ~1.000 active projects
- >1.500 clinical trials
- 20 active start-ups
- ~80M budget



Lluís Revert



Juan Rodés



Ciril Rozman



2023 – Integration of FCRB and IDIBAPS
to strengthen research and innovation
strategy and operations

’70s – Strong Clinical Research, Leader in Spain

- Volunteer donations by Hospital Clínic medical doctors of 1.5% of salary to promote research

1986 – First foundation in Spain to develop research and innovation at Hospital Clínic

- University of Barcelona
- Hospital Clinic of Barcelona

1996 – Creation of IDIBAPS, a research institute to promote **translational research**



Juan Rodés



David Serrat



José M. Brucill



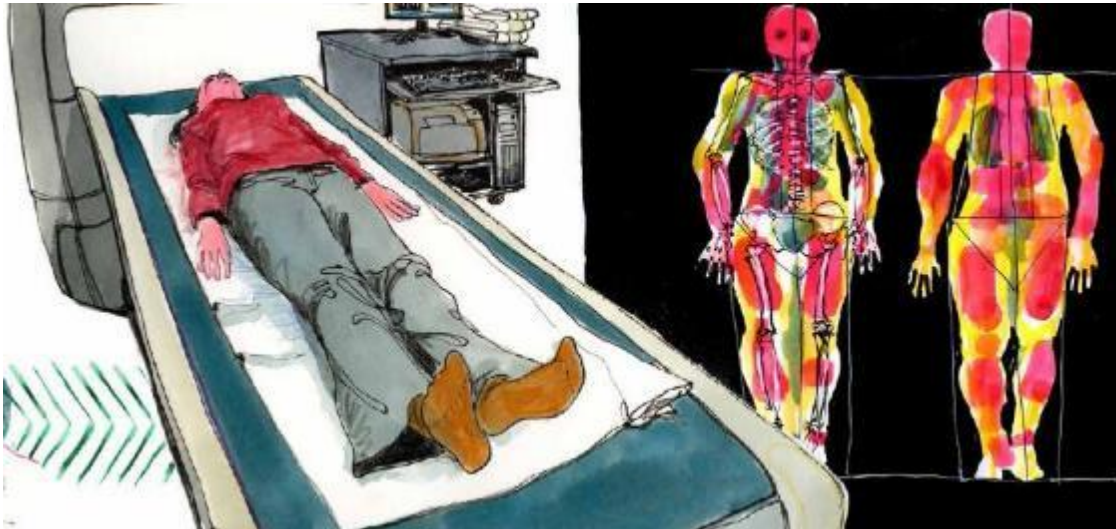
José M. Mato



Mission: From knowledge to cure

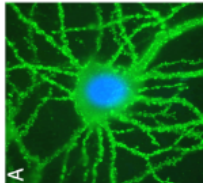
Vision: To contribute significantly to improve the health and quality of life of people through high impact research

Values: Integrity, Accountability and Care





- Pathogenesis and clinical management of **chronic liver disease**.
- New protocols for **liver cancer diagnosis and treatment**.



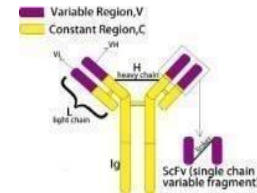
- Discovery of new **neuroautoimmune diseases**, pathogenesis and management of patients.
- Diagnosis and **new treatments** of neurodegenerative, vascular and movement disorders.



- **Genome and epigenome** sequencing of lymphoid neoplasms.
- Identification of **new lymphoid entities** and pathogenic mechanisms.



- Population-based strategy to prevent **colorectal cancer**.
- Pathogenesis and management of **chronic inflammatory bowel disease**.



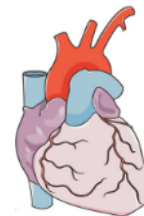
- **Immunotherapy**: first academic CAR-Ts in Europe based on research from 1990.



- First stages and new approaches of **schizophrenia, bipolar and neurodevelopmental disorders**.

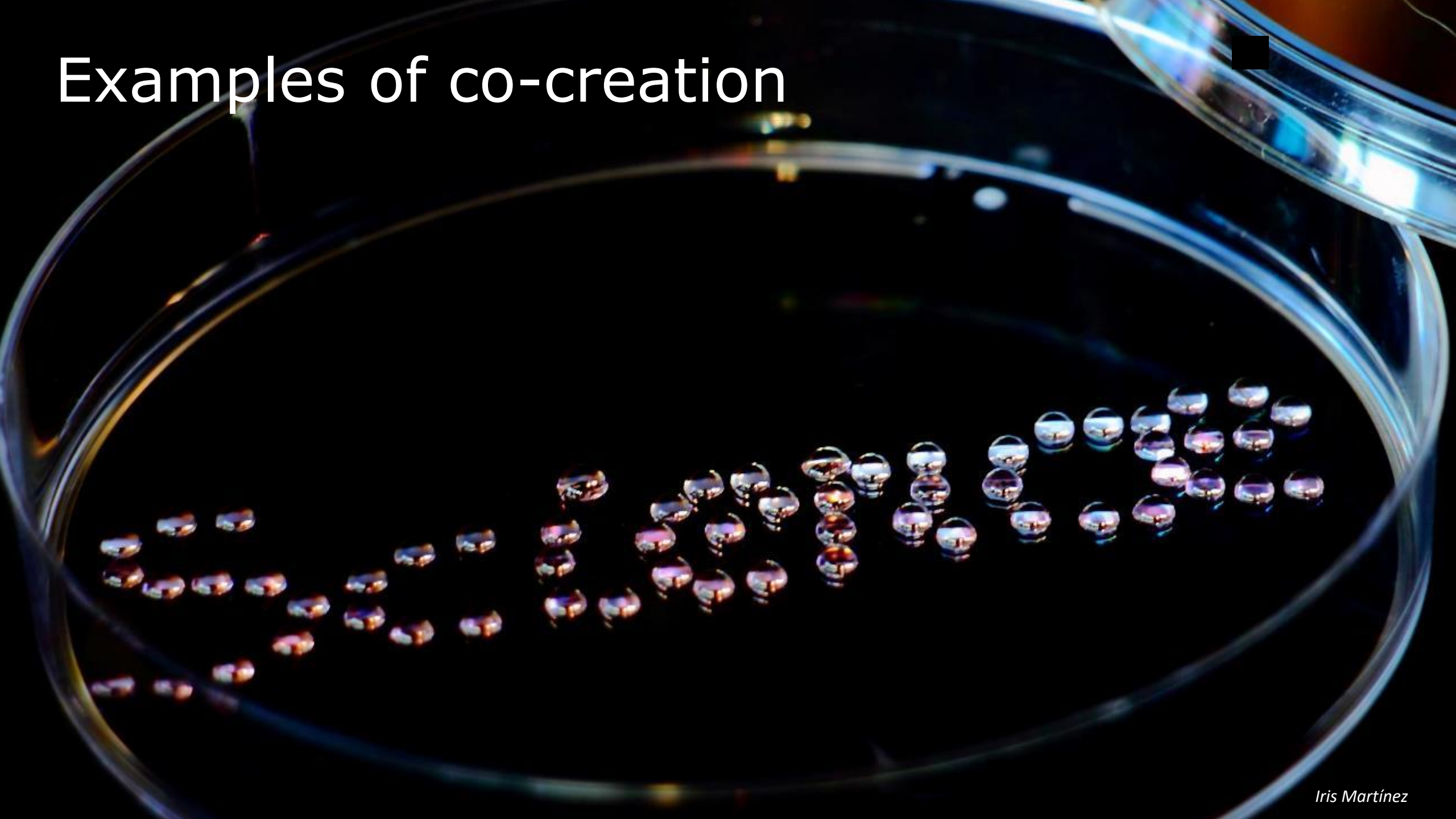


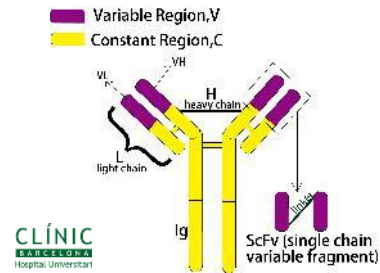
- Neurological control of obesity and diabetes.
- Impact of the **Mediterranean diet** on prevention of **cardiovascular diseases**.



- Image characterization of **cardiac arrhythmias** and novel therapeutic strategies.
- Minimal invasive intervention of valvular cardiac disorders.

Examples of co-creation





Clone: A3-B1 (IgG2a) 1990
S Immunologia-CDB-HCP

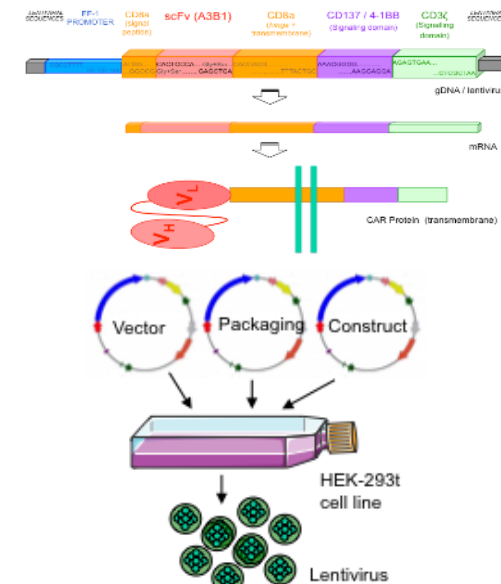


University of Pennsylvania
Manel Juan Visiting professor

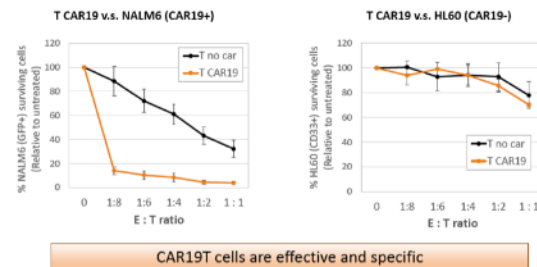


Research projects

CAR design & production



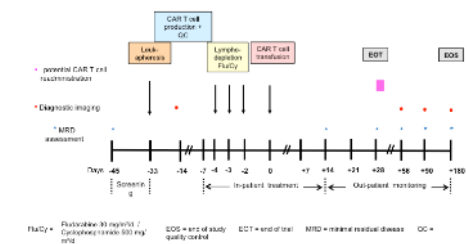
In vitro CAR19-mediated T cell cytotoxic activity



PRECLINICAL STEPS



ARI Project



CLINICAL TRIAL



- > 30 years of Research and Innovation
- > 200 professionals, interdisciplinary team
- 500 treated patients
- Developments of new academic ARIs – 2 approved by AEMPS, 1 by EMA as “PRIME”
- “[ARI, a story of love and life](#)” documentary



Facilitating collaborations



Talent development



Stakeholder engagement



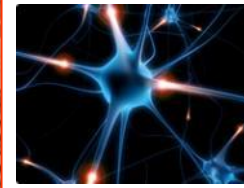
Area 1
Biological aggression and response mechanisms (12 groups)



Area 2
Respiratory, cardiovascular and renal pathobiology and bioengineering (14 groups)



Area 3
Liver, digestive system and metabolism (22 groups)



Area 4
Clinical and experimental neuroscience (21 groups)

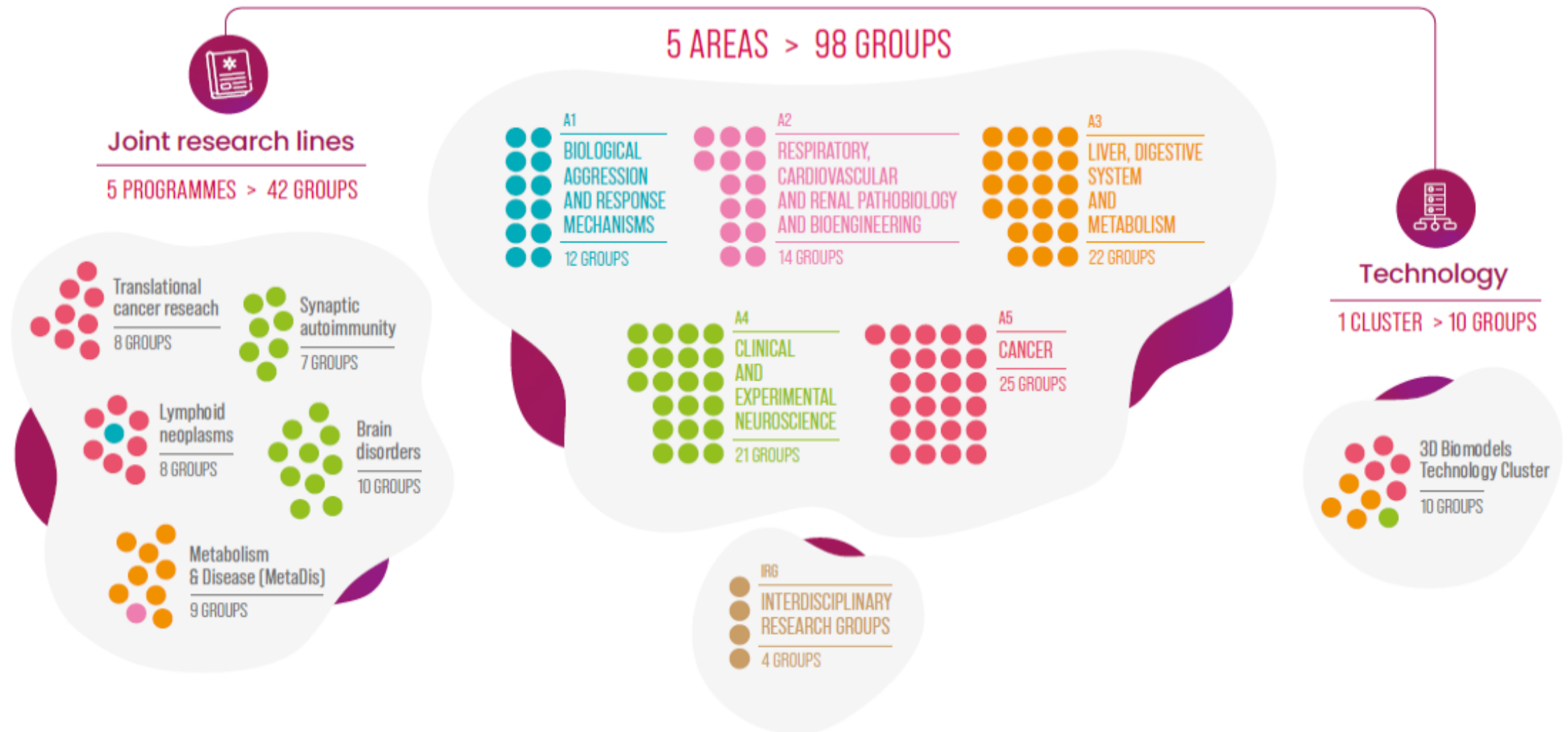


Area 5
Cancer (25 groups)

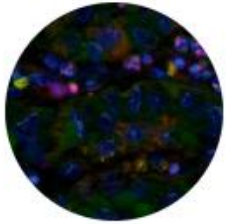


Transversal research groups
Primary healthcare, nursing, clinical pharmacology, multimodal imaging

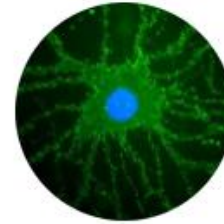
New scientific organization to promote interdisciplinary collaborations



New scientific organization to promote interdisciplinary collaborations



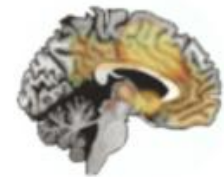
Translational cancer research programme



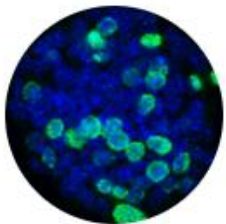
Synaptic autoimmunity in neurology, psychiatry and cognitive neuroscience programme



Lymphoid neoplasms programme



Translational research programme for brain disorders



Metabolism and disease programme (MetaDis): a multidisciplinary approach to understanding metabolic diseases

Career development for **researchers** and **clinician-scientists**



HR EXCELLENCE IN RESEARCH

Everything you need to know
about your experience at
IDIBAPS



Research career

Discover how our research career is structured.



Gender Equality Plan

Access to our Gender Equality Plan



Stepping-stone

Discover the opportunities provided by this training program for predoctoral and postdoctoral researchers.



BITRECS

Discover the Biomedicine International training research programme for excellent clinician-scientists, jointly funded by the European Commission and the "La Caixa" Foundation.



HRS4R

We have the HR Excellence in Research seal.



Seminars

See our Institutional program of research seminars.



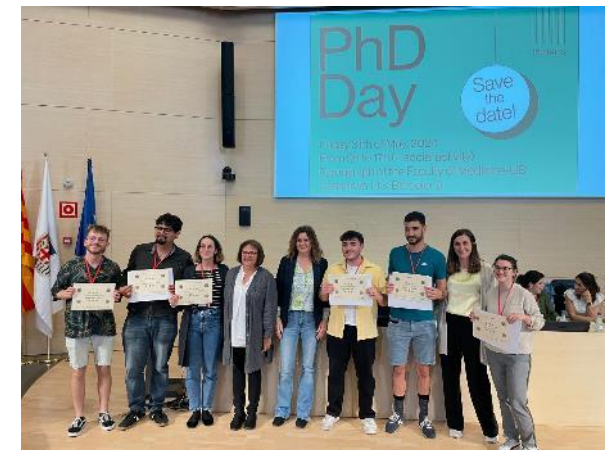
Toolbox

Toolbox IDIBAPS Talks Series is a cycle of talks that focuses on different topics of general interest for all IDIBAPS-FCRB research community.



Institutional policies

Access our registry of institutional policies



2. Promoting talent

IDIBAPS Research Career: defined tenure-track system



Basic/translational
scientists



March 31 2023

IDIBAPS researcher **Sílvia Affó** receives an ERC Starting Grant

Over the next five years, the project DynamHet will study the origin, evolution and function of heterogeneity presented by cancer-associated fibroblasts, as well as their role in tumour development and progression.



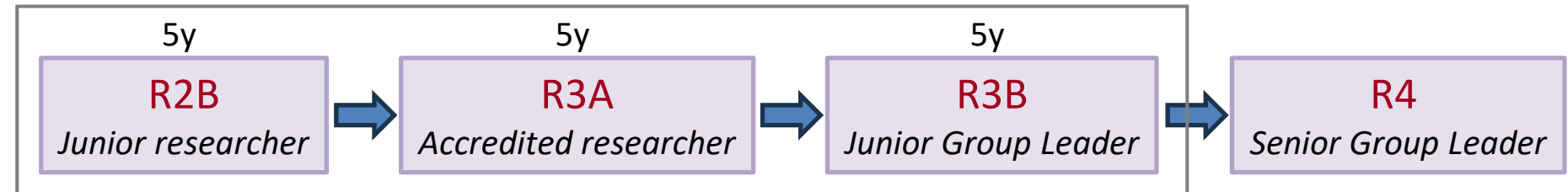
September 13 2024

IDIBAPS researcher **Marianna Spatola** is awarded an ERC Starting Grant for research into autoimmune encephalitis

Her 5-year ImmuBRAIN project is funded with 1.5 million euros and aims to gain a greater understanding of the immunological mechanisms of autoimmune encephalitis, and in particular encephalitis associated with antibodies against the NMDA receptors.



Clinician scientists



+ dedicated support team, mentoring, financial support

2. Promoting talent

Dedicated career-track for clinician scientists...



Rio Hortega 2y

Juan Rodes 4y



Emerald 3y ½, COFUND programme, **Europe**.

BITRECS programme, 100% research, 2 to 3 years, diverse sources of funding.

Estella Matutes Extraordinary Scholarship 2y, physician specialist in Hematology or Hematopathology.

50/50 5y, renewable, periodic peer-review evaluation, for MDs who want to lead independent research (**IDIBAPS**).

80/20 3+2y, renewable, periodic peer-review evaluation, for MDs (**IDIBAPS**).

80/20 5y, for MD in hepatology (**EF-CLIF**)

Research contracts.

Joan Rodés-Josep Baselga Advanced Research Contracts 3y, on IDIBAPS research areas, supported by **BBVA** foundation.

Intensification contracts, 2y, to carry out research (**Hospital Clínic**).

Sabbaticals.



Dedicated career-track for clinician scientists...

Structured programs to train the next generation of clinician scientists



Fig.1 | The many traits of the clinician scientist. Clinician scientists have multiple roles that need to be addressed by specific measures within structured programs. Some measures apply to multiple roles.

Structured programs for training clinician scientists have been implemented in several European countries, but these must include adequate resourcing and mentoring and foster career opportunities.

ELEMENTS OF SUCCESS

- Institutional commitment, rewards and incentives – institutional career pipeline
- Protected research time
- Mentoring
- National and international networking
- Patient engagement

3. Stakeholder engagement



Science generation for school children: workshops, escape room



Laboratories visits for Patients and Patient Associations



Science summer camp for children



Art & Science collaborating with Suñol and Gloria Soler Foundations



Talks at civic centres for the general public



IDIBAPS Scientific Photography contest exhibition



Open day to IDIBAPS families and friends, citizens



International Day of Women and Girls and Science: scientist speak out

COLLABORATION WITH PATIENT EXPERIENCE OBSERVATORY

- Knowledge, methodologies and good practices
- Training for researchers
- Joint projects
- Patient experience week



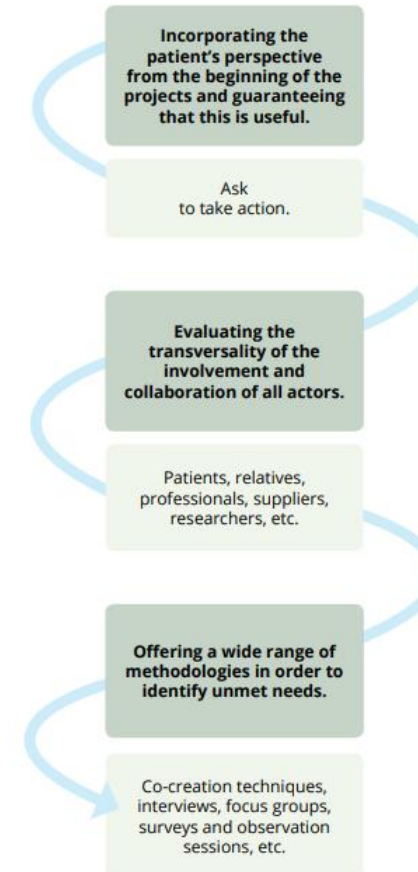
A PATIENT EXPERIENCE FORUM

The Patient Experience Forum of the Hospital Clínic of Barcelona is an initiative that promotes a new, effective and innovative work method with the creation of a collaborative open space where all the stakeholders involved in the health sector can exchange their perspectives. A special emphasis is given to the voice of the patients and their caregivers.

The Forum is also a physical space within the hospital, a place to reflect, rethink and co-create solutions to improve healthcare services and increase their value from the patient's perspective.



HOW DO WE WORK?



SERVICE PORTFOLIO

Evaluation of the patient's experience in a clinical setting

- Focus groups, in-depth interviews and surveys
- Support in the design, implementation and evaluation of those activities

Innovation in services

- Design thinking
- Solutions prototyping

Research

- Competitive and collaborative projects
- Identification of unmet needs

Training

- Short training courses for professionals
- Design and evaluation of training programmes for patients
- Support to the Methodology of Therapeutical Education Course

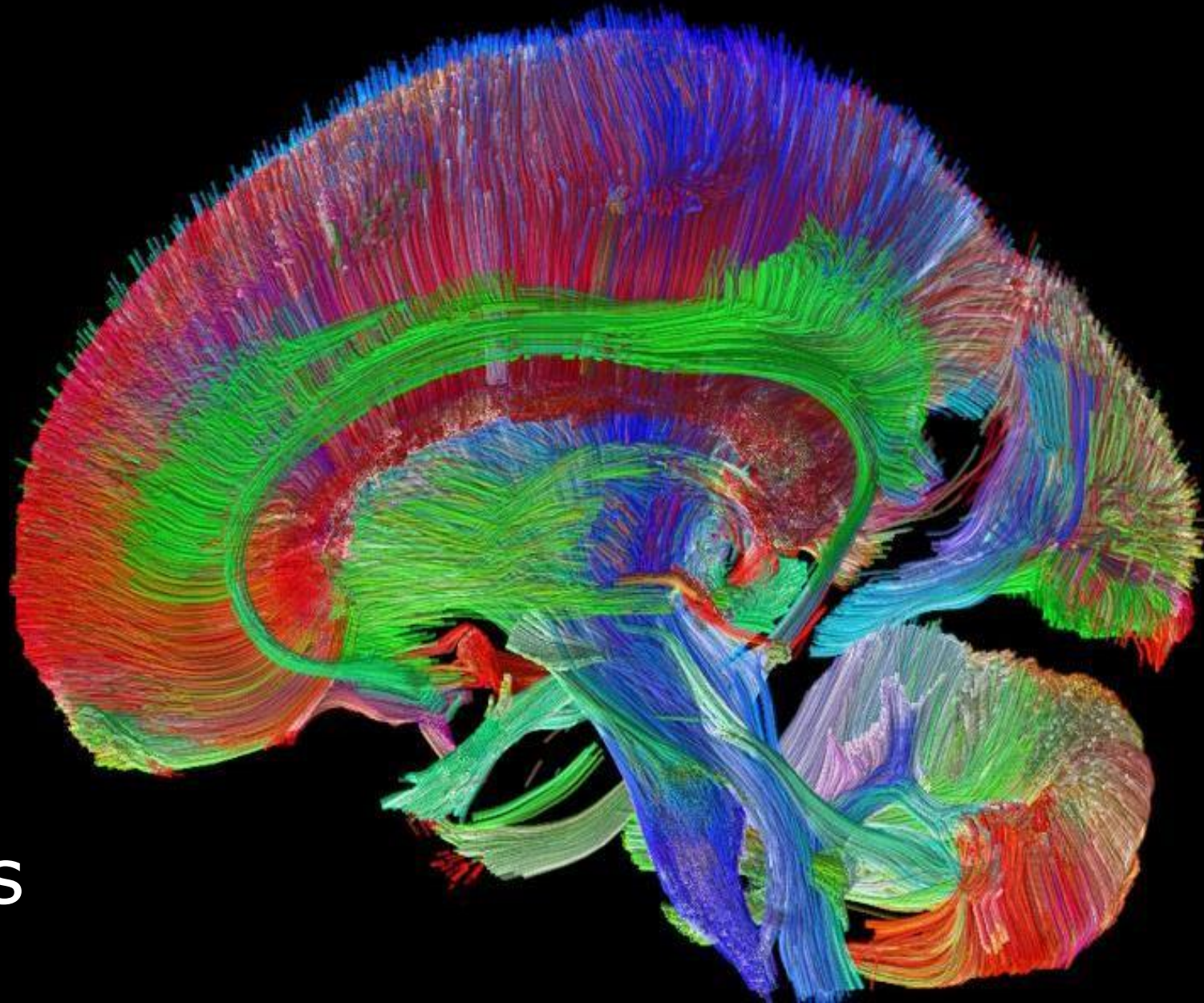
Knowledge exchange

- Patient's Coffee (open events for patients)
- Elevator Pitch techniques
- XPA Congress Barcelona

Communication

- Corporate social networks
- Newsletter





Future projects

Clínic Comprehensive Cancer Center (4C)



2023



2024 - onwards

A joint journey towards an international reference in oncology, integrating **healthcare, research, innovation** and **education**

- **Future Clínic Health Campus**

- International hub for knowledge, research, and health, with a social and economic impact and integrated into the urban fabric

- **Scale & Scope**

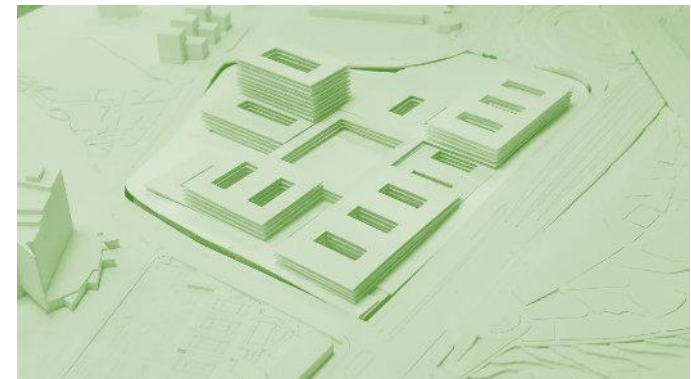
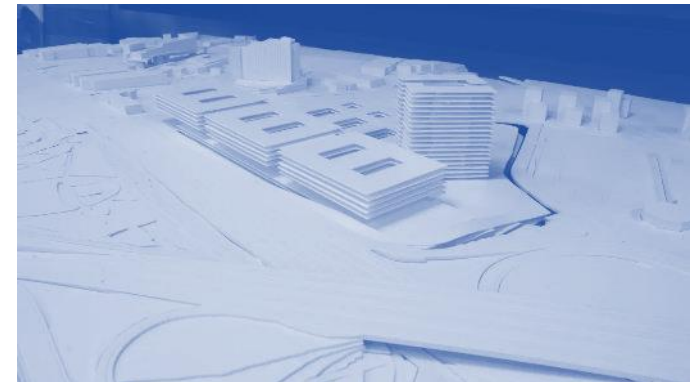
- 300,000 m²

- **Co-creation in action**

- Dedicated Master's degree in Architecture to draft the specifications for the international design competition
- Multistakeholder working groups include researchers, clinicians, and infrastructure leaders
- Inspired by international visits
- Society engagement by living lab approach

- **Design principles**

- Innovation, sustainability, flexibility, efficiency, interconnections, high-tech, well-being



Many thanks and open to explore new collaborations in Greece!

